

Anti-SERPINI1 antibody (181-410) (STJ118149)

STJ118149

GENERAL INFORMATION

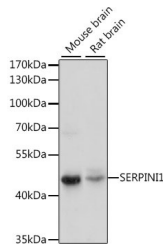
Product Type	Primary antibodies
Short Description	Rabbit polyclonal antibody anti-SERPINI1 (181-410) is suitable for use in Western Blot, Immunohistochemistry and Immunofluorescence.
Applications	WB, IHC, IF
Host/Source	Rabbit
Reactivity	Mouse, Rat

PRODUCT PROPERTIES

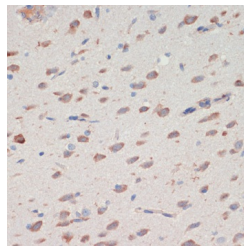
Clonality	Polyclonal
Clone ID	
Concentration	
Conjugation	Unconjugated
Purification	Affinity purification
Dilution Range	WB 1:500-1:2000 IHC 1:50-1:100 IF 1:50-1:100
Formulation	PBS containing 0.02% Sodium Azide, 50% Glycerol, pH7.3.
Isotype	IgG
Storage Instruction	Store in a freezer at -20°C and avoid freeze-thaw cycles.

TARGET INFORMATION

Gene ID	5274
Gene Symbol	SERPINI1
Uniprot ID	NEUS_HUMAN
Immunogen	Recombinant fusion protein containing a sequence corresponding to amino acids 181-410 of human SERPINI1 (NP_005016.1).
Immunogen Region	181-410
Specificity	
Immunogen Sequence	



Western blot analysis of extracts of various cell lines, using SERPINI1 antibody (STJ118149) at 1:1000 dilution. Secondary antibody: HRP Goat Anti-rabbit IgG (H+L) at 1:10000 dilution. Lysates/proteins: 25ug per lane. Blocking buffer: 3% nonfat dry milk in TBST. Detection: ECL Enhanced Kit. Exposure time: 90s.



Immunohistochemistry of paraffin-embedded rat brain using SERPINI1 antibody (STJ118149) at dilution of 1:200 (40x lens).