

## Anti-KLRK1 antibody (50-150) (STJ118020)

STJ118020

### GENERAL INFORMATION

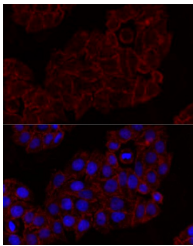
<b>Product Type</b>	Primary antibodies
<b>Short Description</b>	Rabbit polyclonal antibody anti-KLRK1 (50-150) is suitable for use in Immunofluorescence.
<b>Applications</b>	IF
<b>Host/Source</b>	Rabbit
<b>Reactivity</b>	Human

### PRODUCT PROPERTIES

<b>Clonality</b>	Polyclonal
<b>Clone ID</b>	
<b>Concentration</b>	
<b>Conjugation</b>	Unconjugated
<b>Purification</b>	Affinity purification
<b>Dilution Range</b>	IF 1:50-1:200
<b>Formulation</b>	PBS containing 0.02% Sodium Azide, 50% Glycerol, pH7.3.
<b>Isotype</b>	IgG
<b>Storage Instruction</b>	Store in a freezer at -20°C and avoid freeze-thaw cycles.

### TARGET INFORMATION

<b>Gene ID</b>	<a href="#">100528032/22914</a>
<b>Gene Symbol</b>	<a href="#">KLRK1</a>
<b>Uniprot ID</b>	<a href="#">NKG2D_HUMAN</a>
<b>Immunogen</b>	A synthetic peptide corresponding to a sequence within amino acids 50-150 of human KLRK1 (NP_031386.2).
<b>Immunogen Region</b>	50-150
<b>Specificity</b>	
<b>Immunogen Sequence</b>	



Immunofluorescence analysis of HeLa cells using KLRK1 antibody (STJ118020) at dilution of 1:100. Blue: DAPI for nuclear staining.