

Anti-Phospho-EPHA2-Y594 antibody (STJ117916)

STJ117916

GENERAL INFORMATION

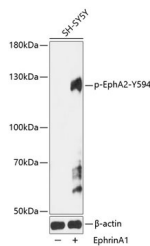
Product Type	Primary antibodies
Short Description	Rabbit polyclonal antibody anti-Phospho-EphA2-Y594 is suitable for use in Western Blot.
Applications	WB
Host/Source	Rabbit
Reactivity	Human, Rat

PRODUCT PROPERTIES

Clonality	Polyclonal
Clone ID	
Concentration	
Conjugation	Unconjugated
Purification	Affinity purification
Dilution Range	WB 1:500-1:2000
Formulation	PBS containing 0.02% Sodium Azide, 50% Glycerol, pH7.3.
Isotype	IgG
Storage Instruction	Store in a freezer at -20°C and avoid freeze-thaw cycles.

TARGET INFORMATION

Gene ID	1969
Gene Symbol	EPHA2
Uniprot ID	EPHA2_HUMAN
Immunogen	A synthetic phosphorylated peptide around Y594 of human EphA2 (NP_004422.2).
Immunogen Region	
Specificity	
Immunogen Sequence	



Western blot analysis of extracts of SH-SY5Y cells, using Phospho-EphA2-Y594 antibody (STJ117916) at 1:1000 dilution. SH-SY5Y cells were treated by EphrinA1 (100 ng/mL) for 5 minutes. Secondary antibody: HRP Goat Anti-rabbit IgG (H+L) at 1:10000 dilution. Lysates/proteins: 25ug per lane. Blocking buffer: 3% BSA. Detection: ECL Basic Kit. Exposure time: 60s.

This product is suitable for in-vitro studies under the RESEARCH USE ONLY [RUO] licence. This product must not be used as for diagnostic or other medical purposes.
 St John's Laboratory Ltd, Knowledge Dock Business Centre, University Way, London, E16 2RD | Tel: 0208 223 3081