

Anti-Phospho-PAK2-S20 antibody (STJ117901)

STJ117901

GENERAL INFORMATION

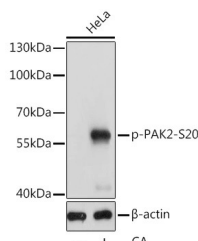
Product Type	Primary antibodies
Short Description	Rabbit polyclonal antibody anti-Phospho-PAK2-S20 is suitable for use in Western Blot.
Applications	WB
Host/Source	Rabbit
Reactivity	Human, Mouse

PRODUCT PROPERTIES

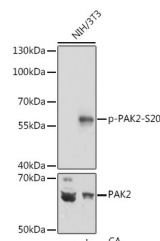
Clonality	Polyclonal
Clone ID	—
Concentration	—
Conjugation	Unconjugated
Purification	Affinity purification
Dilution Range	WB 1:500-1:2000
Formulation	PBS containing 0.02% Sodium Azide, 50% Glycerol, pH7.3.
Isotype	IgG
Storage Instruction	Store in a freezer at -20°C and avoid freeze-thaw cycles.

TARGET INFORMATION

Gene ID	5062
Gene Symbol	PAK2
Uniprot ID	PAK2_HUMAN
Immunogen	A synthetic phosphorylated peptide around S20 of human PAK2 (NP_002568.2).
Immunogen Region	—
Specificity	—
Immunogen Sequence	—



Western blot analysis of extracts of HeLa cells, using Phospho-PAK2-S20 antibody (STJ117901) at 1:2000 dilution. HeLa cells were treated by Calyculin A (100nM) for 30 minutes after serum-starvation overnight. Secondary antibody: HRP Goat Anti-rabbit IgG (H+L) at 1:10000 dilution. Lysates/proteins: 25ug per lane. Blocking buffer: 3% BSA. Detection: ECL Basic Kit. Exposure time: 5s.



Western blot analysis of extracts of NIH/3T3 cells, using Phospho-PAK2-S20 polyclonal antibody (STJ117901) at 1:2000 dilution or PAK2 antibody (STJ29472). NIH/3T3 cells were treated by Calyculin A (100nM) for 30 minutes after serum-starvation overnight. Secondary antibody: HRP Goat Anti-rabbit IgG (H+L) at 1:10000 dilution. Lysates/proteins: 25ug per lane. Blocking buffer: 3% BSA. Detection: ECL Basic Kit. Exposure time: 5s.

This product is suitable for in-vitro studies under the RESEARCH USE ONLY [RUO] licence. This product must not be used as for diagnostic or other medical purposes.
 St John's Laboratory Ltd, Knowledge Dock Business Centre, University Way, London, E16 2RD | Tel: 0208 223 3081