

Anti-Phospho-CBX3-S83 antibody (STJ117899)

STJ117899

GENERAL INFORMATION

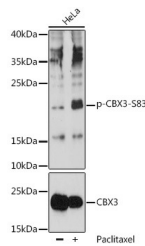
Product Type	Primary antibodies
Short Description	Rabbit polyclonal antibody anti-Phospho-CBX3-S83 is suitable for use in Western Blot.
Applications	WB
Host/Source	Rabbit
Reactivity	Human, Mouse

PRODUCT PROPERTIES

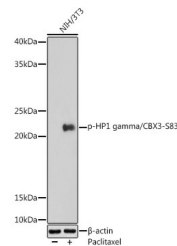
Clonality	Polyclonal
Clone ID	
Concentration	
Conjugation	Unconjugated
Purification	Affinity purification
Dilution Range	WB 1:500-1:2000
Formulation	PBS containing 0.02% Sodium Azide, 50% Glycerol, pH7.3.
Isotype	IgG
Storage Instruction	Store in a freezer at -20°C and avoid freeze-thaw cycles.

TARGET INFORMATION

Gene ID	11335
Gene Symbol	CBX3
Uniprot ID	CBX3_HUMAN
Immunogen	A phospho specific peptide corresponding to residues surrounding S83 of human HP1 gamma/CBX3
Immunogen Region	
Specificity	
Immunogen Sequence	



Western blot analysis of extracts of HeLa cells, using Phospho-HP1 gamma/CBX3-S83 polyclonal antibody (STJ117899) at 1:1000 dilution or HP1 gamma/CBX3 antibody (STJ22921). HeLa cells were treated by Paclitaxel (100 nM/mL) at 37 °C for 20 hours. Secondary antibody: HRP Goat Anti-rabbit IgG (H+L) at 1:10000 dilution. Lysates/proteins: 25ug per lane. Blocking buffer: 3% BSA. Detection: ECL Basic Kit. Exposure time: 60s.



Western blot analysis of extracts of NIH/3T3 cells, using Phospho-HP1 gamma/CBX3-S83 antibody (STJ117899) at 1:1000 dilution. NIH/3T3 cells were treated by Paclitaxel (100 nM) at 37 °C for 20 hours. Secondary antibody: HRP Goat Anti-rabbit IgG (H+L) at 1:10000 dilution. Lysates/proteins: 25ug per lane. Blocking buffer: 3% nonfat dry milk in TBST. Detection: ECL Enhanced Kit. Exposure time: 180s.

This product is suitable for in-vitro studies under the RESEARCH USE ONLY [RUO] licence. This product must not be used as for diagnostic or other medical purposes.
 St John's Laboratory Ltd, Knowledge Dock Business Centre, University Way, London, E16 2RD | Tel: 0208 223 3081