

Anti-Phospho-PLCG2-Y759 antibody (STJ117883)

STJ117883

GENERAL INFORMATION

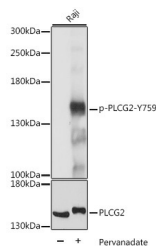
Product Type	Primary antibodies
Short Description	Rabbit polyclonal antibody anti-Phospho-PLCG2-Y759 is suitable for use in Western Blot.
Applications	WB
Host/Source	Rabbit
Reactivity	Human

PRODUCT PROPERTIES

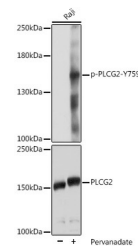
Clonality	Polyclonal
Clone ID	
Concentration	
Conjugation	Unconjugated
Purification	Affinity purification
Dilution Range	WB 1:500-1:2000
Formulation	PBS containing 0.02% Sodium Azide, 50% Glycerol, pH7.3.
Isotype	IgG
Storage Instruction	Store in a freezer at -20°C and avoid freeze-thaw cycles.

TARGET INFORMATION

Gene ID	5336
Gene Symbol	PLCG2
Uniprot ID	PLCG2_HUMAN
Immunogen	A synthetic phosphorylated peptide around Y759 of human PLCG2 (NP_002652.2).
Immunogen Region	
Specificity	
Immunogen Sequence	



Western blot analysis of extracts of Raji cells, using Phospho-PLCG2-Y759 antibody (STJ117883) at 1:2000 dilution or PLCG2 antibody (STJ25024). Raji cells were treated by Pervanadate (1 mM) at 37 °C for 30 minutes. Secondary antibody: HRP Goat Anti-rabbit IgG (H+L) at 1:10000 dilution. Lysates/proteins: 25ug per lane. Blocking buffer: 3% BSA. Detection: ECL Basic Kit. Exposure time: 1s.



Western blot analysis of extracts of Raji cells, using Phospho-PLCG2-Y759 polyclonal antibody (STJ117883) at 1:2000 dilution or PLCG2 antibody (STJ25024). Raji cells were treated by Pervanadate (1 mM) at 37 °C for 30 minutes. Secondary antibody: HRP Goat Anti-rabbit IgG (H+L) at 1:10000 dilution. Lysates/proteins: 25ug per lane. Blocking buffer: 3% BSA. Detection: ECL Basic Kit. Exposure time: 1s.

This product is suitable for in-vitro studies under the RESEARCH USE ONLY [RUO] licence. This product must not be used as for diagnostic or other medical purposes.
 St John's Laboratory Ltd, Knowledge Dock Business Centre, University Way, London, E16 2RD | Tel: 0208 223 3081