

Anti-Phospho-PRKCD-Y311 antibody (STJ117870)

STJ117870

GENERAL INFORMATION

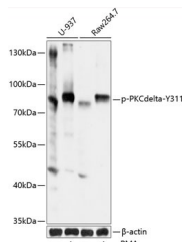
Product Type	Primary antibodies
Short Description	Rabbit polyclonal antibody anti-Phospho-PKCdelta-Y311 is suitable for use in Western Blot.
Applications	WB
Host/Source	Rabbit
Reactivity	Human, Mouse

PRODUCT PROPERTIES

Clonality	Polyclonal
Clone ID	
Concentration	
Conjugation	Unconjugated
Purification	Affinity purification
Dilution Range	WB 1:500-1:2000
Formulation	PBS containing 0.02% Sodium Azide, 50% Glycerol, pH7.3.
Isotype	IgG
Storage Instruction	Store in a freezer at -20°C and avoid freeze-thaw cycles.

TARGET INFORMATION

Gene ID	5580
Gene Symbol	PRKCD
Uniprot ID	KPCD_HUMAN
Immunogen	A phospho specific peptide corresponding to residues surrounding Y311 of human PKCdelta
Immunogen Region	
Specificity	
Immunogen Sequence	



Western blot analysis of extracts of U937 and Raw264.7 cells, using Phospho-PKCdelta-Y311 antibody (STJ117870) at 1:1000 dilution. U-937 cells were treated by PMA/TPA (200nM) for 30 minutes. RAW 264.7 cells were treated by PMA (200 nM) for 30 minutes. Secondary antibody: HRP Goat Anti-rabbit IgG (H+L) at 1:10000 dilution. Lysates/proteins: 25ug per lane. Blocking buffer: 3% BSA. Detection: ECL Basic Kit. Exposure time: 60s.

This product is suitable for in-vitro studies under the RESEARCH USE ONLY [RUO] licence. This product must not be used as for diagnostic or other medical purposes.
 St John's Laboratory Ltd, Knowledge Dock Business Centre, University Way, London, E16 2RD | Tel: 0208 223 3081