

Anti-MIS12 antibody (1-205) (STJ117703)

STJ117703

GENERAL INFORMATION

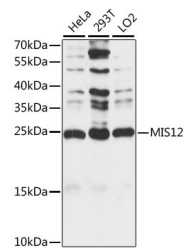
| | |
|--------------------------|--|
| Product Type | Primary antibodies |
| Short Description | Rabbit polyclonal antibody anti-MIS12 (1-205) is suitable for use in Western Blot. |
| Applications | WB |
| Host/Source | Rabbit |
| Reactivity | Human |

PRODUCT PROPERTIES

| | |
|----------------------------|---|
| Clonality | Polyclonal |
| Clone ID | |
| Concentration | |
| Conjugation | Unconjugated |
| Purification | Affinity purification |
| Dilution Range | WB 1:200-1:2000 |
| Formulation | PBS containing 0.02% Sodium Azide, 50% Glycerol, pH7.3. |
| Isotype | IgG |
| Storage Instruction | Store in a freezer at -20°C and avoid freeze-thaw cycles. |

TARGET INFORMATION

| | |
|---------------------------|---|
| Gene ID | 79003 |
| Gene Symbol | MIS12 |
| Uniprot ID | MIS12_HUMAN |
| Immunogen | Recombinant fusion protein containing a sequence corresponding to amino acids 1-205 of human MIS12 (NP_076944.1). |
| Immunogen Region | 1-205 |
| Specificity | |
| Immunogen Sequence | |



Western blot analysis of extracts of various cell lines, using MIS12 antibody (STJ117703) at 1:1000 dilution. Secondary antibody: HRP Goat Anti-rabbit IgG (H+L) at 1:10000 dilution. Lysates/proteins: 25µg per lane. Blocking buffer: 3% nonfat dry milk in TBST. Detection: ECL Basic Kit. Exposure time: 30s.

This product is suitable for in-vitro studies under the RESEARCH USE ONLY [RUO] licence. This product must not be used as for diagnostic or other medical purposes.

St John's Laboratory Ltd, Knowledge Dock Business Centre, University Way, London, E16 2RD | Tel: 0208 223 3081