

Anti-BIN3 antibody (1-253) (STJ117673)

STJ117673

GENERAL INFORMATION

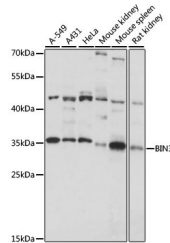
Product Type	Primary antibodies
Short Description	Rabbit polyclonal antibody anti-BIN3 (1-253) is suitable for use in Western Blot.
Applications	WB
Host/Source	Rabbit
Reactivity	Human, Mouse, Rat

PRODUCT PROPERTIES

Clonality	Polyclonal
Clone ID	
Concentration	
Conjugation	Unconjugated
Purification	Affinity purification
Dilution Range	WB 1:200-1:2000
Formulation	PBS containing 0.02% Sodium Azide, 50% Glycerol, pH7.3.
Isotype	IgG
Storage Instruction	Store in a freezer at -20°C and avoid freeze-thaw cycles.

TARGET INFORMATION

Gene ID	55909
Gene Symbol	BIN3
Uniprot ID	BIN3_HUMAN
Immunogen	Recombinant fusion protein containing a sequence corresponding to amino acids 1-253 of human BIN3 (NP_061158.1).
Immunogen Region	1-253
Specificity	
Immunogen Sequence	



Western blot analysis of extracts of various cell lines, using BIN3 antibody (STJ117673) at 1:1000 dilution. Secondary antibody: HRP Goat Anti-rabbit IgG (H+L) at 1:10000 dilution. Lysates/proteins: 25µg per lane. Blocking buffer: 3% nonfat dry milk in TBST. Detection: ECL Basic Kit. Exposure time: 30s.