

Anti-ANAPC11 antibody (1-84) (STJ117644)

STJ117644

GENERAL INFORMATION

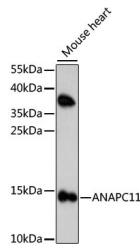
| | |
|--------------------------|--|
| Product Type | Primary antibodies |
| Short Description | Rabbit polyclonal antibody anti-ANAPC11 (1-84) is suitable for use in Western Blot, Immunohistochemistry and Immunofluorescence. |
| Applications | WB, IHC, IF |
| Host/Source | Rabbit |
| Reactivity | Human, Mouse |

PRODUCT PROPERTIES

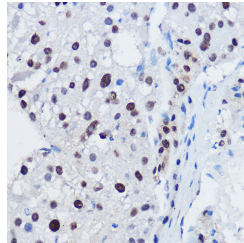
| | |
|----------------------------|---|
| Clonality | Polyclonal |
| Clone ID | |
| Concentration | |
| Conjugation | Unconjugated |
| Purification | Affinity purification |
| Dilution Range | WB 1:200-1:2000 IHC 1:50-1:200 IF 1:50-1:200 |
| Formulation | PBS containing 0.02% Sodium Azide, 50% Glycerol, pH7.3. |
| Isotype | IgG |
| Storage Instruction | Store in a freezer at -20°C and avoid freeze-thaw cycles. |

TARGET INFORMATION

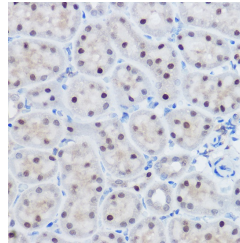
| | |
|---------------------------|---|
| Gene ID | 51529 |
| Gene Symbol | ANAPC11 |
| Uniprot ID | APC11_HUMAN |
| Immunogen | Recombinant fusion protein containing a sequence corresponding to amino acids 1-84 of human ANAPC11 (NP_001002245.1). |
| Immunogen Region | 1-84 |
| Specificity | |
| Immunogen Sequence | |



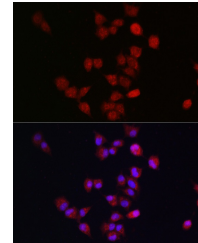
Western blot analysis of extracts of mouse heart, using ANAPC11 antibody (STJ117644) at 1:1000 dilution. Secondary antibody: HRP Goat Anti-rabbit IgG (H+L) at 1:10000 dilution. Lysates/proteins: 25µg per lane. Blocking buffer: 3% nonfat dry milk in TBST. Detection: ECL Enhanced Kit. Exposure time: 120s.



Immunohistochemistry of paraffin-embedded human liver cancer using ANAPC11 rabbit polyclonal antibody (STJ117644) at dilution of 1:150 (40x lens).



Immunohistochemistry of paraffin-embedded mouse liver cancer using ANAPC11 rabbit polyclonal antibody (STJ117644) at dilution of 1:150 (40x lens).



Immunofluorescence analysis of A-549 cells using ANAPC11 antibody (STJ117644) at dilution of 1:300. Blue: DAPI for nuclear staining.