

Anti-MRPL46 antibody (1-279) (STJ117623)

STJ117623

GENERAL INFORMATION

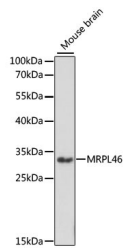
Product Type	Primary antibodies
Short Description	Rabbit polyclonal antibody anti-MRPL46 (1-279) is suitable for use in Western Blot, Immunohistochemistry and Immunofluorescence.
Applications	WB, IHC, IF
Host/Source	Rabbit
Reactivity	Human, Mouse

PRODUCT PROPERTIES

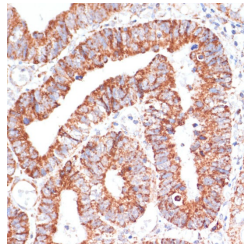
Clonality	Polyclonal
Clone ID	
Concentration	
Conjugation	Unconjugated
Purification	Affinity purification
Dilution Range	WB 1:200-1:2000 IHC 1:50-1:200 IF 1:50-1:200
Formulation	PBS containing 0.02% Sodium Azide, 50% Glycerol, pH7.3.
Isotype	IgG
Storage Instruction	Store in a freezer at -20°C and avoid freeze-thaw cycles.

TARGET INFORMATION

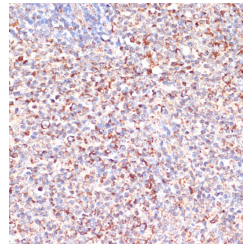
Gene ID	26589
Gene Symbol	MRPL46
Uniprot ID	RM46_HUMAN
Immunogen	Recombinant fusion protein containing a sequence corresponding to amino acids 1-279 of human MRPL46 (NP_071446.2).
Immunogen Region	1-279
Specificity	
Immunogen Sequence	



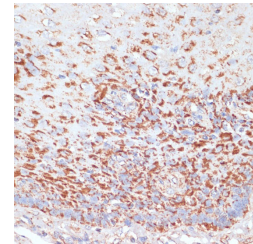
Western blot analysis of extracts of mouse brain, using MRPL46 antibody (STJ117623) at 1:1000 dilution. Secondary antibody: HRP Goat Anti-rabbit IgG (H+L) at 1:10000 dilution. Lysates/proteins: 25µg per lane. Blocking buffer: 3% nonfat dry milk in TBST. Detection: ECL Basic Kit. Exposure time: 90s.



Immunohistochemistry of paraffin-embedded human colon carcinoma using MRPL46 antibody (STJ117623) at dilution of 1:100 (40x lens).



Immunohistochemistry of paraffin-embedded human lymph node using MRPL46 antibody (STJ117623) at dilution of 1:100 (40x lens).



Immunohistochemistry of paraffin-embedded human esophageal using MRPL46 antibody (STJ117623) at dilution of 1:100 (40x lens).

This product is suitable for in-vitro studies under the RESEARCH USE ONLY [RUO] licence. This product must not be used as for diagnostic or other medical purposes.
St John's Laboratory Ltd, Knowledge Dock Business Centre, University Way, London, E16 2RD | Tel: 0208 223 3081