

Anti-ATP6V0A1 antibody (60-300) (STJ117453)

STJ117453

GENERAL INFORMATION

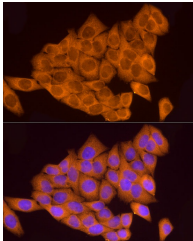
Product Type	Primary antibodies
Short Description	Rabbit polyclonal antibody anti-ATP6V0A1 (60-300) is suitable for use in Western Blot and Immunofluorescence.
Applications	WB, IF
Host/Source	Rabbit
Reactivity	Human, Mouse, Rat

PRODUCT PROPERTIES

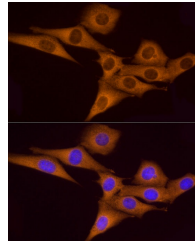
Clonality	Polyclonal
Clone ID	
Concentration	
Conjugation	Unconjugated
Purification	Affinity purification
Dilution Range	WB 1:500-1:2000 IF 1:50-1:200
Formulation	PBS containing 0.02% Sodium Azide, 50% Glycerol, pH7.3.
Isotype	IgG
Storage Instruction	Store in a freezer at -20°C and avoid freeze-thaw cycles.

TARGET INFORMATION

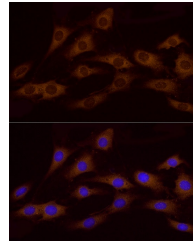
Gene ID	535
Gene Symbol	ATP6V0A1
Uniprot ID	VPP1_HUMAN
Immunogen	Recombinant fusion protein containing a sequence corresponding to amino acids 60-300 of human ATP6V0A1 (NP_001123493.1).
Immunogen Region	60-300
Specificity	
Immunogen Sequence	



Immunofluorescence analysis of HeLa using ATP6V0A1 antibody (STJ117453) at dilution of 1:100. Blue: DAPI for nuclear staining.



Immunofluorescence analysis of NIH/3T3 using ATP6V0A1 antibody (STJ117453) at dilution of 1:100. Blue: DAPI for nuclear staining.



Immunofluorescence analysis of C6 using ATP6V0A1 antibody (STJ117453) at dilution of 1:100. Blue: DAPI for nuclear staining.

This product is suitable for in-vitro studies under the RESEARCH USE ONLY [RUO] licence. This product must not be used as for diagnostic or other medical purposes.
St John's Laboratory Ltd, Knowledge Dock Business Centre, University Way, London, E16 2RD | Tel: 0208 223 3081