

Anti-ATP5C1 antibody (26-298) (STJ117452)

STJ117452

GENERAL INFORMATION

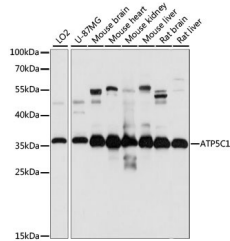
Product Type	Primary antibodies
Short Description	Rabbit polyclonal antibody anti-ATP5C1 (26-298) is suitable for use in Western Blot, Immunohistochemistry and Immunofluorescence.
Applications	WB, IHC, IF
Host/Source	Rabbit
Reactivity	Human, Mouse, Rat

PRODUCT PROPERTIES

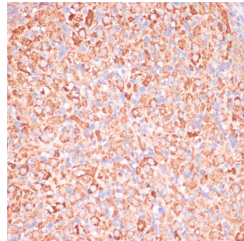
Clonality	Polyclonal
Clone ID	
Concentration	
Conjugation	Unconjugated
Purification	Affinity purification
Dilution Range	WB 1:200-1:2000 IHC 1:50-1:200 IF 1:50-1:200
Formulation	PBS containing 0.02% Sodium Azide, 50% Glycerol, pH7.3.
Isotype	IgG
Storage Instruction	Store in a freezer at -20°C and avoid freeze-thaw cycles.

TARGET INFORMATION

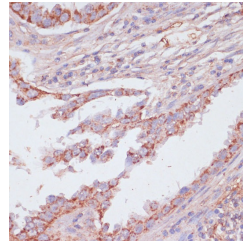
Gene ID	509
Gene Symbol	ATP5F1C
Uniprot ID	ATPG_HUMAN
Immunogen	Recombinant fusion protein containing a sequence corresponding to amino acids 26-298 of human ATP5C1 (NP_001001973.1).
Immunogen Region	26-298
Specificity	
Immunogen Sequence	



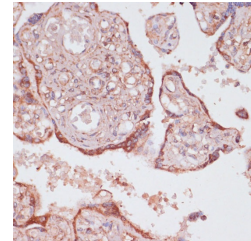
Western blot analysis of extracts of various cell lines, using ATP5C1 antibody (STJ117452) at 1:1000 dilution. Secondary antibody: HRP Goat Anti-rabbit IgG (H+L) at 1:10000 dilution. Lysates/proteins: 25µg per lane. Blocking buffer: 3% nonfat dry milk in TBST. Detection: ECL Basic Kit. Exposure time: 5S.



Immunohistochemistry of paraffin-embedded rat ovary using ATP5C1 antibody (STJ117452) at dilution of 1:100 (40x lens).



Immunohistochemistry of paraffin-embedded human lung cancer using ATP5C1 antibody (STJ117452) at dilution of 1:100 (40x lens).



Immunohistochemistry of paraffin-embedded human placenta using ATP5C1 antibody (STJ117452) at dilution of 1:100 (40x lens).