

Anti-PLA2G4D antibody (510-680) (STJ117418)

STJ117418

GENERAL INFORMATION

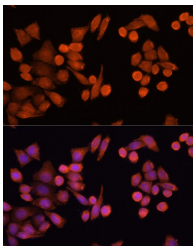
Product Type	Primary antibodies
Short Description	Rabbit polyclonal antibody anti-PLA2G4D (510-680) is suitable for use in Immunofluorescence.
Applications	IF
Host/Source	Rabbit
Reactivity	Human

PRODUCT PROPERTIES

Clonality	Polyclonal
Clone ID	
Concentration	
Conjugation	Unconjugated
Purification	Affinity purification
Dilution Range	IF 1:50-1:200
Formulation	PBS containing 0.02% Sodium Azide, 50% Glycerol, pH7.3.
Isotype	IgG
Storage Instruction	Store in a freezer at -20°C and avoid freeze-thaw cycles.

TARGET INFORMATION

Gene ID	283748
Gene Symbol	PLA2G4D
Uniprot ID	PA24D_HUMAN
Immunogen	Recombinant fusion protein containing a sequence corresponding to amino acids 510-680 of human PLA2G4D (NP_828848.3).
Immunogen Region	510-680
Specificity	
Immunogen Sequence	



Immunofluorescence analysis of HeLa cells using PLA2G4D antibody (STJ117418) at dilution of 1:100 (40x lens). Blue: DAPI for nuclear staining.

This product is suitable for in-vitro studies under the RESEARCH USE ONLY [RUO] licence. This product must not be used as for diagnostic or other medical purposes.
St John's Laboratory Ltd, Knowledge Dock Business Centre, University Way, London, E16 2RD | Tel: 0208 223 3081