

Anti-SLC24A5 antibody (220-300) (STJ117417)

STJ117417

GENERAL INFORMATION

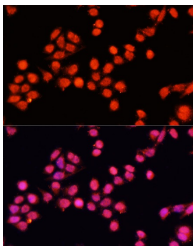
| | |
|--------------------------|--|
| Product Type | Primary antibodies |
| Short Description | Rabbit polyclonal antibody anti-SLC24A5 (220-300) is suitable for use in Immunofluorescence. |
| Applications | IF |
| Host/Source | Rabbit |
| Reactivity | Human |

PRODUCT PROPERTIES

| | |
|----------------------------|---|
| Clonality | Polyclonal |
| Clone ID | |
| Concentration | |
| Conjugation | Unconjugated |
| Purification | Affinity purification |
| Dilution Range | IF 1:50-1:200 |
| Formulation | PBS containing 0.02% Sodium Azide, 50% Glycerol, pH7.3. |
| Isotype | IgG |
| Storage Instruction | Store in a freezer at -20°C and avoid freeze-thaw cycles. |

TARGET INFORMATION

| | |
|---------------------------|---|
| Gene ID | 283652 |
| Gene Symbol | SLC24A5 |
| Uniprot ID | NCKX5_HUMAN |
| Immunogen | Recombinant fusion protein containing a sequence corresponding to amino acids 220-300 of human SLC24A5 (NP_995322.1). |
| Immunogen Region | 220-300 |
| Specificity | |
| Immunogen Sequence | |



Immunofluorescence analysis of HeLa cells using SLC24A5 antibody (STJ117417) at dilution of 1:100 (40x lens). Blue: DAPI for nuclear staining.

This product is suitable for in-vitro studies under the RESEARCH USE ONLY [RUO] licence. This product must not be used as for diagnostic or other medical purposes.
St John's Laboratory Ltd, Knowledge Dock Business Centre, University Way, London, E16 2RD | Tel: 0208 223 3081