

## Anti-ULBP2 antibody (26-216) (STJ117388)

STJ117388

### GENERAL INFORMATION

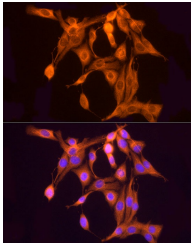
<b>Product Type</b>	Primary antibodies
<b>Short Description</b>	Rabbit polyclonal antibody anti-ULBP2 (26-216) is suitable for use in Western Blot and Immunofluorescence.
<b>Applications</b>	WB, IF
<b>Host/Source</b>	Rabbit
<b>Reactivity</b>	Human, Mouse, Rat

### PRODUCT PROPERTIES

<b>Clonality</b>	Polyclonal
<b>Clone ID</b>	
<b>Concentration</b>	
<b>Conjugation</b>	Unconjugated
<b>Purification</b>	Affinity purification
<b>Dilution Range</b>	WB 1:500-1:2000 IF 1:50-1:200
<b>Formulation</b>	PBS containing 0.02% Sodium Azide, 50% Glycerol, pH7.3.
<b>Isotype</b>	IgG
<b>Storage Instruction</b>	Store in a freezer at -20°C and avoid freeze-thaw cycles.

### TARGET INFORMATION

<b>Gene ID</b>	80328
<b>Gene Symbol</b>	ULBP2
<b>Uniprot ID</b>	ULBP2_HUMAN
<b>Immunogen</b>	Recombinant fusion protein containing a sequence corresponding to amino acids 26-216 of human ULBP2 (NP_079493.1).
<b>Immunogen Region</b>	26-216
<b>Specificity</b>	
<b>Immunogen Sequence</b>	



Immunofluorescence analysis of PC-12 cells using ULBP2 rabbit polyclonal antibody (STJ117388) at dilution of 1:50 (40x lens). Blue: DAPI for nuclear staining.