

Anti-KLHDC2 antibody (1-240) (STJ117340)

STJ117340

GENERAL INFORMATION

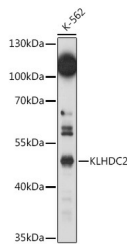
Product Type	Primary antibodies
Short Description	Rabbit polyclonal antibody anti-KLHDC2 (1-240) is suitable for use in Western Blot.
Applications	WB
Host/Source	Rabbit
Reactivity	Human

PRODUCT PROPERTIES

Clonality	Polyclonal
Clone ID	
Concentration	
Conjugation	Unconjugated
Purification	Affinity purification
Dilution Range	WB 1:500-1:2000
Formulation	PBS containing 0.02% Sodium Azide, 50% Glycerol, pH7.3.
Isotype	IgG
Storage Instruction	Store in a freezer at -20°C and avoid freeze-thaw cycles.

TARGET INFORMATION

Gene ID	23588
Gene Symbol	KLHDC2
Uniprot ID	KLDC2_HUMAN
Immunogen	Recombinant fusion protein containing a sequence corresponding to amino acids 1-240 of human KLHDC2 (NP_055130.1).
Immunogen Region	1-240
Specificity	
Immunogen Sequence	



Western blot analysis of extracts of K-562 cells, using KLHDC2 antibody (STJ117340) at 1:1000 dilution. Secondary antibody: HRP Goat Anti-rabbit IgG (H+L) at 1:10000 dilution. Lysates/proteins: 25µg per lane. Blocking buffer: 3% nonfat dry milk in TBST. Detection: ECL Basic Kit. Exposure time: 150s.

This product is suitable for in-vitro studies under the RESEARCH USE ONLY [RUO] licence. This product must not be used as for diagnostic or other medical purposes.

St John's Laboratory Ltd, Knowledge Dock Business Centre, University Way, London, E16 2RD | Tel: 0208 223 3081