

Anti-SLC25A4 antibody (40-298) (STJ117221)

STJ117221

GENERAL INFORMATION

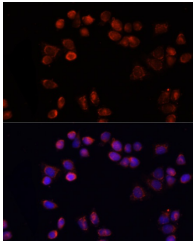
Product Type	Primary antibodies
Short Description	Rabbit polyclonal antibody anti-SLC25A4 (40-298) is suitable for use in Western Blot and Immunofluorescence.
Applications	WB, IF
Host/Source	Rabbit
Reactivity	Human

PRODUCT PROPERTIES

Clonality	Polyclonal
Clone ID	
Concentration	
Conjugation	Unconjugated
Purification	Affinity purification
Dilution Range	WB 1:500-1:2000 IF 1:50-1:200
Formulation	PBS containing 0.02% Sodium Azide, 50% Glycerol, pH7.3.
Isotype	IgG
Storage Instruction	Store in a freezer at -20°C and avoid freeze-thaw cycles.

TARGET INFORMATION

Gene ID	291
Gene Symbol	SLC25A4
Uniprot ID	ADT1_HUMAN
Immunogen	Recombinant fusion protein containing a sequence corresponding to amino acids 40-298 of human SLC25A4/ANT1 (NP_001142.2).
Immunogen Region	40-298
Specificity	
Immunogen Sequence	



Immunofluorescence analysis of HeLa cells using SLC25A4/ANT1 antibody (STJ117221) at dilution of 1:100 (40x lens). Blue: DAPI for nuclear staining.

This product is suitable for in-vitro studies under the RESEARCH USE ONLY [RUO] licence. This product must not be used as for diagnostic or other medical purposes.
St John's Laboratory Ltd, Knowledge Dock Business Centre, University Way, London, E16 2RD | Tel: 0208 223 3081