

Anti-SEPT8 antibody (348-427) (STJ117206)

STJ117206

GENERAL INFORMATION

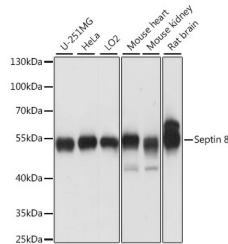
Product Type	Primary antibodies
Short Description	Rabbit polyclonal antibody anti-SEPT8 (348-427) is suitable for use in Western Blot, Immunohistochemistry and Immunofluorescence.
Applications	WB, IHC, IF
Host/Source	Rabbit
Reactivity	Human, Mouse, Rat

PRODUCT PROPERTIES

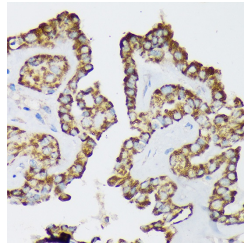
Clonality	Polyclonal
Clone ID	
Concentration	
Conjugation	Unconjugated
Purification	Affinity purification
Dilution Range	WB 1:500-1:2000 IHC 1:50-1:200 IF 1:50-1:200
Formulation	PBS containing 0.02% Sodium Azide, 50% Glycerol, pH7.3.
Isotype	IgG
Storage Instruction	Store in a freezer at -20°C and avoid freeze-thaw cycles.

TARGET INFORMATION

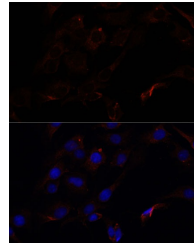
Gene ID	23176
Gene Symbol	SEPTIN8
Uniprot ID	SEPT8_HUMAN
Immunogen	Recombinant fusion protein containing a sequence corresponding to amino acids 348-427 of human Septin 8 (NP_001287728.1).
Immunogen Region	348-427
Specificity	
Immunogen Sequence	



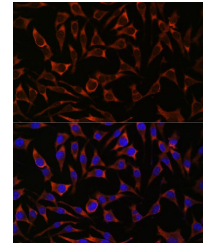
Western blot analysis of extracts of various cell lines, using Septin 8 antibody (STJ117206) at 1:1000 dilution. Secondary antibody: HRP Goat Anti-rabbit IgG (H+L) at 1:10000 dilution. Lysates/proteins: 25µg per lane. Blocking buffer: 3% nonfat dry milk in TBST. Detection: ECL Basic Kit. Exposure time: 10s.



Immunohistochemistry of paraffin-embedded Human thyroid cancer using Septin 8 rabbit polyclonal antibody (STJ117206) at dilution of 1:100 (40x lens).



Immunofluorescence analysis of C6 cells using 43716 antibody (STJ117206) at dilution of 1:100. Blue: DAPI for nuclear staining.



Immunofluorescence analysis of L929 cells using 43716 antibody (STJ117206) at dilution of 1:100. Blue: DAPI for nuclear staining.