

Anti-TFDP1 antibody (1-290) (STJ116989)

STJ116989

GENERAL INFORMATION

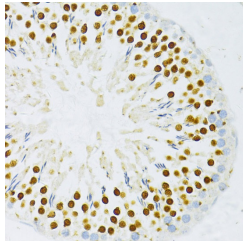
Product Type	Primary antibodies
Short Description	Rabbit polyclonal antibody anti-TFDP1 (1-290) is suitable for use in Western Blot, Immunohistochemistry and Immunofluorescence.
Applications	WB, IHC, IF
Host/Source	Rabbit
Reactivity	Human, Mouse, Rat

PRODUCT PROPERTIES

Clonality	Polyclonal
Clone ID	
Concentration	
Conjugation	Unconjugated
Purification	Affinity purification
Dilution Range	WB 1:500-1:2000 IHC 1:50-1:200 IF 1:50-1:200
Formulation	PBS containing 0.02% Sodium Azide, 50% Glycerol, pH7.3.
Isotype	IgG
Storage Instruction	Store in a freezer at -20°C and avoid freeze-thaw cycles.

TARGET INFORMATION

Gene ID	7027
Gene Symbol	TFDP1
Uniprot ID	TFDP1_HUMAN
Immunogen	Recombinant fusion protein containing a sequence corresponding to amino acids 1-290 of human DP1/DP1/TFDP1 (NP_009042.1).
Immunogen Region	1-290
Specificity	
Immunogen Sequence	



Immunohistochemistry of paraffin-embedded rat testis using DP1/DP1/TFDP1 antibody (STJ116989) at dilution of 1:100 (40x lens).