

Anti-PTPRN2 antibody (22-242) (STJ116974)

STJ116974

GENERAL INFORMATION

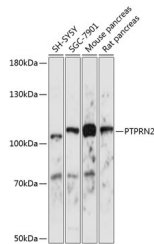
Product Type	Primary antibodies
Short Description	Rabbit polyclonal antibody anti-PTPRN2 (22-242) is suitable for use in Western Blot, Immunohistochemistry and Immunofluorescence.
Applications	WB, IHC, IF
Host/Source	Rabbit
Reactivity	Human, Mouse, Rat

PRODUCT PROPERTIES

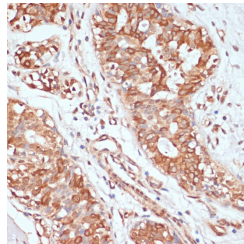
Clonality	Polyclonal
Clone ID	
Concentration	
Conjugation	Unconjugated
Purification	Affinity purification
Dilution Range	WB 1:500-1:2000 IHC 1:50-1:100 IF 1:50-1:100
Formulation	PBS containing 0.02% Sodium Azide, 50% Glycerol, pH7.3.
Isotype	IgG
Storage Instruction	Store in a freezer at -20°C and avoid freeze-thaw cycles.

TARGET INFORMATION

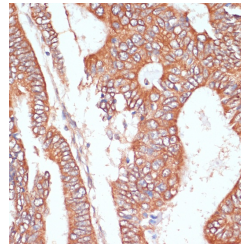
Gene ID	5799
Gene Symbol	PTPRN2
Uniprot ID	PTPR2_HUMAN
Immunogen	Recombinant fusion protein containing a sequence corresponding to amino acids 22-242 of human PTPRN2 (NP_570858.2).
Immunogen Region	22-242
Specificity	
Immunogen Sequence	



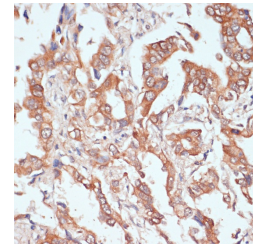
Western blot analysis of extracts of various cell lines, using PTPRN2 antibody (STJ116974) at 1:1000 dilution. Secondary antibody: HRP Goat Anti-rabbit IgG (H+L) at 1:10000 dilution. Lysates/proteins: 25µg per lane. Blocking buffer: 3% nonfat dry milk in TBST. Detection: ECL Basic Kit. Exposure time: 5s.



Immunohistochemistry of paraffin-embedded human mammary cancer using PTPRN2 antibody (STJ116974) at dilution of 1:100 (40x lens).



Immunohistochemistry of paraffin-embedded human colon carcinoma using PTPRN2 antibody (STJ116974) at dilution of 1:100 (40x lens).



Immunohistochemistry of paraffin-embedded human lung cancer using PTPRN2 antibody (STJ116974) at dilution of 1:100 (40x lens).