

Anti-PTCH1 antibody (770-970) (STJ116972)

STJ116972

GENERAL INFORMATION

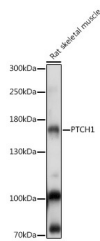
Product Type	Primary antibodies
Short Description	Rabbit polyclonal antibody anti-PTCH1 (770-970) is suitable for use in Western Blot and Immunofluorescence.
Applications	WB, IF
Host/Source	Rabbit
Reactivity	Human, Mouse, Rat

PRODUCT PROPERTIES

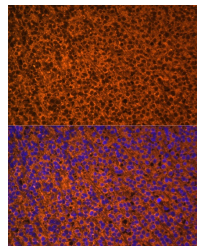
Clonality	Polyclonal
Clone ID	
Concentration	
Conjugation	Unconjugated
Purification	Affinity purification
Dilution Range	WB 1:500-1:2000 IF 1:50-1:200
Formulation	PBS containing 0.02% Sodium Azide, 50% Glycerol, pH7.3.
Isotype	IgG
Storage Instruction	Store in a freezer at -20°C and avoid freeze-thaw cycles.

TARGET INFORMATION

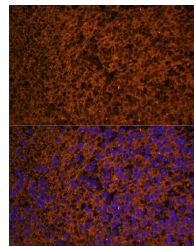
Gene ID	5727
Gene Symbol	PTCH1
Uniprot ID	PTC1_HUMAN
Immunogen	Recombinant fusion protein containing a sequence corresponding to amino acids 770-970 of human PTCH1 (NP_000255.2).
Immunogen Region	770-970
Specificity	
Immunogen Sequence	



Western blot analysis of extracts of Rat skeletal muscle, using PTCH1 antibody (STJ116972) at 1:1000 dilution. Secondary antibody: HRP Goat Anti-rabbit IgG (H+L) at 1:10000 dilution. Lysates/proteins: 25µg per lane. Blocking buffer: 3% nonfat dry milk in TBST. Detection: ECL Basic Kit. Exposure time: 10s.



Immunofluorescence analysis of mouse embryos cells using PTCH1 antibody (STJ116972) at dilution of 1:100. Blue: DAPI for nuclear staining.



Immunofluorescence analysis of mouse embryos cells using PTCH1 antibody (STJ116972) at dilution of 1:100. Blue: DAPI for nuclear staining.

This product is suitable for in-vitro studies under the RESEARCH USE ONLY [RUO] licence. This product must not be used as for diagnostic or other medical purposes.
St John's Laboratory Ltd, Knowledge Dock Business Centre, University Way, London, E16 2RD | Tel: 0208 223 3081