

Anti-ALDH6A1 antibody (326-535) (STJ116950)

STJ116950

GENERAL INFORMATION

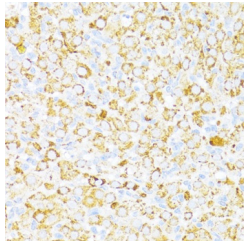
Product Type	Primary antibodies
Short Description	Rabbit polyclonal antibody anti-ALDH6A1 (326-535) is suitable for use in Immunohistochemistry and Immunofluorescence.
Applications	IHC, IF
Host/Source	Rabbit
Reactivity	Human, Mouse, Rat

PRODUCT PROPERTIES

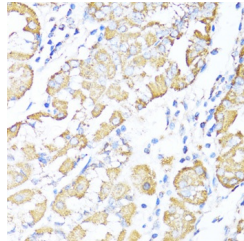
Clonality	Polyclonal
Clone ID	
Concentration	
Conjugation	Unconjugated
Purification	Affinity purification
Dilution Range	IHC 1:50-1:200 IF 1:50-1:200
Formulation	PBS containing 0.02% Sodium Azide, 50% Glycerol, pH7.3.
Isotype	IgG
Storage Instruction	Store in a freezer at -20°C and avoid freeze-thaw cycles.

TARGET INFORMATION

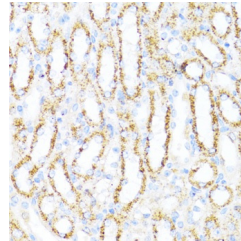
Gene ID	4329
Gene Symbol	ALDH6A1
Uniprot ID	MMSA_HUMAN
Immunogen	Recombinant fusion protein containing a sequence corresponding to amino acids 326-535 of human ALDH6A1 (NP_005580.1).
Immunogen Region	326-535
Specificity	
Immunogen Sequence	



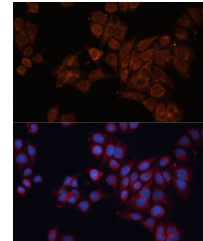
Immunohistochemistry of paraffin-embedded rat ovary using ALDH6A1 antibody (STJ116950) at dilution of 1:100 (40x lens).



Immunohistochemistry of paraffin-embedded human stomach using ALDH6A1 antibody (STJ116950) at dilution of 1:100 (40x lens).



Immunohistochemistry of paraffin-embedded mouse kidney using ALDH6A1 antibody (STJ116950) at dilution of 1:100 (40x lens).



Immunofluorescence analysis of HeLa cells using ALDH6A1 Polyclonal Antibody (STJ116950) at dilution of 1:100 (40x lens). Blue: DAPI for nuclear staining.

This product is suitable for in-vitro studies under the RESEARCH USE ONLY [RUO] licence. This product must not be used as for diagnostic or other medical purposes.
St John's Laboratory Ltd, Knowledge Dock Business Centre, University Way, London, E16 2RD | Tel: 0208 223 3081