

## Anti-CDH11 antibody (637-796) (STJ116917)

STJ116917

### GENERAL INFORMATION

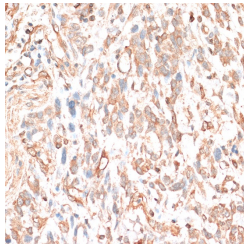
|                          |   |
|--------------------------|---|
| <b>Product Type</b>      | Primary antibodies  |
| <b>Short Description</b> | Rabbit polyclonal antibody anti-CDH11 (637-796) is suitable for use in Western Blot, Immunohistochemistry and Immunofluorescence. |
| <b>Applications</b>      | WB, IHC, IF   |
| <b>Host/Source</b>       | Rabbit  |
| <b>Reactivity</b>        | Human, Rat  |

### PRODUCT PROPERTIES

|                            |   |
|----------------------------|---|
| <b>Clonality</b>           | Polyclonal  |
| <b>Clone ID</b>            |   |
| <b>Concentration</b>       |   |
| <b>Conjugation</b>         | Unconjugated  |
| <b>Purification</b>        | Affinity purification                                     |
| <b>Dilution Range</b>      | WB 1:500-1:2000<br>IHC 1:50-1:100<br>IF 1:50-1:100        |
| <b>Formulation</b>         | PBS containing 0.02% Sodium Azide, 50% Glycerol, pH7.3.   |
| <b>Isotype</b>             | IgG   |
| <b>Storage Instruction</b> | Store in a freezer at -20°C and avoid freeze-thaw cycles. |

### TARGET INFORMATION

|                           |   |
|---------------------------|---|
| <b>Gene ID</b>            | <a href="#">1009</a>  |
| <b>Gene Symbol</b>        | <a href="#">CDH11</a>   |
| <b>Uniprot ID</b>         | <a href="#">CAD11_HUMAN</a>   |
| <b>Immunogen</b>          | Recombinant fusion protein containing a sequence corresponding to amino acids 637-796 of human CDH11 (NP_001788.2). |
| <b>Immunogen Region</b>   | 637-796   |
| <b>Specificity</b>        |   |
| <b>Immunogen Sequence</b> |   |



Immunohistochemistry of paraffin-embedded Human gastric cancer using CDH11 antibody (STJ116917) at dilution of 1:100 (40x lens).