

Anti-CD36 antibody (301-400) (STJ116914)

STJ116914

GENERAL INFORMATION

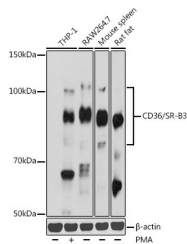
Product Type	Primary antibodies
Short Description	Rabbit polyclonal antibody anti-CD36 (301-400) is suitable for use in Western Blot and Immunofluorescence.
Applications	WB, IF
Host/Source	Rabbit
Reactivity	Human, Mouse, Rat

PRODUCT PROPERTIES

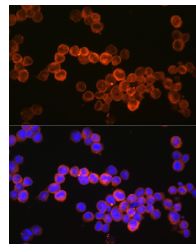
Clonality	Polyclonal
Clone ID	
Concentration	
Conjugation	Unconjugated
Purification	Affinity purification
Dilution Range	WB 1:500-1:2000 IF 1:50-1:200
Formulation	PBS containing 0.02% Sodium Azide, 50% Glycerol, pH7.3.
Isotype	IgG
Storage Instruction	Store in a freezer at -20°C and avoid freeze-thaw cycles.

TARGET INFORMATION

Gene ID	948
Gene Symbol	CD36
Uniprot ID	CD36_HUMAN
Immunogen	Recombinant fusion protein containing a sequence corresponding to amino acids 301-400 of human CD36/SR-B3 (NP_001120916.1).
Immunogen Region	301-400
Specificity	
Immunogen Sequence	



Western blot analysis of extracts of various cell lines, using CD36/SR-B3 antibody (STJ116914) at 1:1000 dilution. THP-1 cells were treated by PMA (80 nM) at 37 °C for overnight. Secondary antibody: HRP Goat Anti-rabbit IgG (H+L) at 1:10000 dilution. Lysates/proteins: 25ug per lane. Blocking buffer: 3% nonfat dry milk in TBST. Detection: ECL Basic Kit. Exposure time: 180s.



Immunofluorescence analysis of U937 cells using CD36/SR-B3 rabbit polyclonal antibody (STJ116914) at dilution of 1:150 (40x lens). Blue: DAPI for nuclear staining.

This product is suitable for in-vitro studies under the RESEARCH USE ONLY [RUO] licence. This product must not be used as for diagnostic or other medical purposes.
St John's Laboratory Ltd, Knowledge Dock Business Centre, University Way, London, E16 2RD | Tel: 0208 223 3081