

## Anti-ALOX12 antibody (483-663) (STJ116903)

STJ116903

### GENERAL INFORMATION

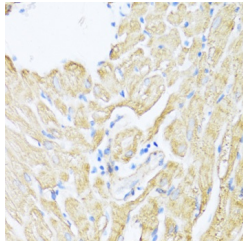
<b>Product Type</b>	Primary antibodies
<b>Short Description</b>	Rabbit polyclonal antibody anti-ALOX12 (483-663) is suitable for use in Immunohistochemistry and Immunofluorescence.
<b>Applications</b>	IHC, IF
<b>Host/Source</b>	Rabbit
<b>Reactivity</b>	Human, Mouse, Rat

### PRODUCT PROPERTIES

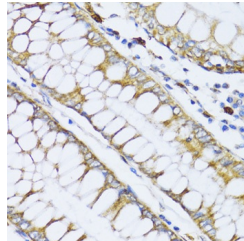
<b>Clonality</b>	Polyclonal
<b>Clone ID</b>	
<b>Concentration</b>	
<b>Conjugation</b>	Unconjugated
<b>Purification</b>	Affinity purification
<b>Dilution Range</b>	IHC 1:50-1:200 IF 1:50-1:200
<b>Formulation</b>	PBS containing 0.02% Sodium Azide, 50% Glycerol, pH7.3.
<b>Isotype</b>	IgG
<b>Storage Instruction</b>	Store in a freezer at -20°C and avoid freeze-thaw cycles.

### TARGET INFORMATION

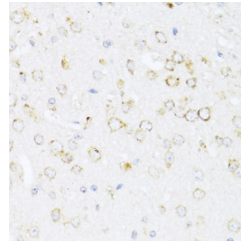
<b>Gene ID</b>	239
<b>Gene Symbol</b>	ALOX12
<b>Uniprot ID</b>	LOX12_HUMAN
<b>Immunogen</b>	Recombinant fusion protein containing a sequence corresponding to amino acids 483-663 of human ALOX12 (NP_000688.2).
<b>Immunogen Region</b>	483-663
<b>Specificity</b>	
<b>Immunogen Sequence</b>	



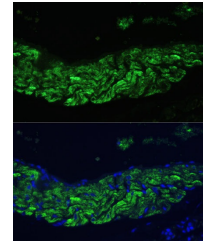
Immunohistochemistry of paraffin-embedded rat heart using ALOX12 antibody (STJ116903) at dilution of 1:100 (40x lens).



Immunohistochemistry of paraffin-embedded human colon carcinoma using ALOX12 antibody (STJ116903) at dilution of 1:100 (40x lens).



Immunohistochemistry of paraffin-embedded mouse brain using ALOX12 antibody (STJ116903) at dilution of 1:100 (40x lens).



Immunofluorescence analysis of rat lung using ALOX12 Polyclonal Antibody (STJ116903) at dilution of 1:100 (40x lens). Blue: DAPI for nuclear staining.

This product is suitable for in-vitro studies under the RESEARCH USE ONLY [RUO] licence. This product must not be used as for diagnostic or other medical purposes.  
St John's Laboratory Ltd, Knowledge Dock Business Centre, University Way, London, E16 2RD | Tel: 0208 223 3081