

Anti-CCNA1 antibody (350-450) (STJ116740)

STJ116740

GENERAL INFORMATION

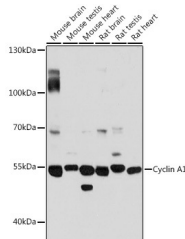
Product Type	Primary antibodies
Short Description	Rabbit polyclonal antibody anti-CCNA1 (350-450) is suitable for use in Western Blot.
Applications	WB
Host/Source	Rabbit
Reactivity	Mouse, Rat

PRODUCT PROPERTIES

Clonality	Polyclonal
Clone ID	
Concentration	
Conjugation	Unconjugated
Purification	Affinity purification
Dilution Range	WB 1:500-1:2000
Formulation	PBS containing 0.02% Sodium Azide, 50% Glycerol, pH7.3.
Isotype	IgG
Storage Instruction	Store in a freezer at -20°C and avoid freeze-thaw cycles.

TARGET INFORMATION

Gene ID	8900
Gene Symbol	CCNA1
Uniprot ID	CCNA1_HUMAN
Immunogen	A synthetic peptide corresponding to a sequence within amino acids 350-450 of human CCNA1 (NP_001104515.1).
Immunogen Region	350-450
Specificity	
Immunogen Sequence	



Western blot analysis of extracts of various cell lines, using Cyclin A1 antibody (STJ116740) at 1:3000 dilution. Secondary antibody: HRP Goat Anti-mouse IgG (H+L) at 1:10000 dilution. Lysates/proteins: 25ug per lane. Blocking buffer: 3% nonfat dry milk in TBST. Detection: ECL Basic Kit. Exposure time: 10s.

This product is suitable for in-vitro studies under the RESEARCH USE ONLY [RUO] licence. This product must not be used as for diagnostic or other medical purposes.
 St John's Laboratory Ltd, Knowledge Dock Business Centre, University Way, London, E16 2RD | Tel: 0208 223 3081