

Anti-PREPL antibody (578-727) (STJ116560)

STJ116560

GENERAL INFORMATION

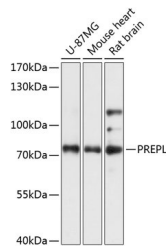
Product Type	Primary antibodies
Short Description	Rabbit polyclonal antibody anti-PREPL (578-727) is suitable for use in Western Blot and Immunofluorescence.
Applications	WB, IF
Host/Source	Rabbit
Reactivity	Human, Mouse, Rat

PRODUCT PROPERTIES

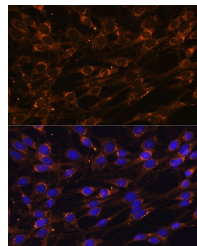
Clonality	Polyclonal
Clone ID	
Concentration	
Conjugation	Unconjugated
Purification	Affinity purification
Dilution Range	WB 1:500-1:2000 IF 1:50-1:100
Formulation	PBS containing 0.02% Sodium Azide, 50% Glycerol, pH7.3.
Isotype	IgG
Storage Instruction	Store in a freezer at -20°C and avoid freeze-thaw cycles.

TARGET INFORMATION

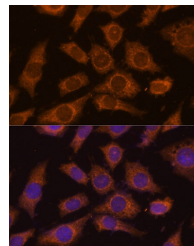
Gene ID	9581
Gene Symbol	PREPL
Uniprot ID	PPCEL_HUMAN
Immunogen	Recombinant fusion protein containing a sequence corresponding to amino acids 578-727 of human PREPL (NP_006027.2).
Immunogen Region	578-727
Specificity	
Immunogen Sequence	



Western blot analysis of extracts of various cell lines, using PREPL antibody (STJ116560) at 1:3000 dilution. Secondary antibody: HRP Goat Anti-rabbit IgG (H+L) at 1:10000 dilution. Lysates/proteins: 25µg per lane. Blocking buffer: 3% nonfat dry milk in TBST. Detection: ECL Basic Kit. Exposure time: 10s.



Immunofluorescence analysis of C6 cells using PREPL Polyclonal Antibody (STJ116560) at dilution of 1:100 (40x lens). Blue: DAPI for nuclear staining.



Immunofluorescence analysis of L929 cells using PREPL Polyclonal Antibody (STJ116560) at dilution of 1:100 (40x lens). Blue: DAPI for nuclear staining.

This product is suitable for in-vitro studies under the RESEARCH USE ONLY [RUO] licence. This product must not be used as for diagnostic or other medical purposes.
St John's Laboratory Ltd, Knowledge Dock Business Centre, University Way, London, E16 2RD | Tel: 0208 223 3081