

Anti-MAN1A2 antibody (60-180) (STJ116484)

STJ116484

GENERAL INFORMATION

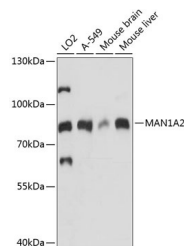
Product Type	Primary antibodies
Short Description	Rabbit polyclonal antibody anti-MAN1A2 (60-180) is suitable for use in Western Blot and Immunohistochemistry.
Applications	WB, IHC
Host/Source	Rabbit
Reactivity	Human, Mouse

PRODUCT PROPERTIES

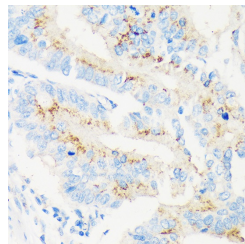
Clonality	Polyclonal
Clone ID	
Concentration	
Conjugation	Unconjugated
Purification	Affinity purification
Dilution Range	WB 1:500-1:2000 IHC 1:50-1:200
Formulation	PBS containing 0.02% Sodium Azide, 50% Glycerol, pH7.3.
Isotype	IgG
Storage Instruction	Store in a freezer at -20°C and avoid freeze-thaw cycles.

TARGET INFORMATION

Gene ID	10905
Gene Symbol	MAN1A2
Uniprot ID	MA1A2_HUMAN
Immunogen	Recombinant fusion protein containing a sequence corresponding to amino acids 60-180 of human MAN1A2 (NP_006690.1).
Immunogen Region	60-180
Specificity	
Immunogen Sequence	



Western blot analysis of extracts of various cell lines, using MAN1A2 antibody (STJ116484) at 1:1000 dilution. Secondary antibody: HRP Goat Anti-rabbit IgG (H+L) at 1:10000 dilution. Lysates/proteins: 25ug per lane. Blocking buffer: 3% nonfat dry milk in TBST. Detection: ECL Basic Kit. Exposure time: 30s.



Immunohistochemistry of paraffin-embedded Human colon carcinoma using MAN1A2 rabbit polyclonal antibody (STJ116484) at dilution of 1:100 (40x lens).