

Anti-KLHL42 antibody (206-505) (STJ116406)

STJ116406

GENERAL INFORMATION

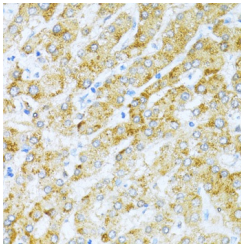
Product Type	Primary antibodies
Short Description	Rabbit polyclonal antibody anti-KLHL42 (206-505) is suitable for use in Immunohistochemistry.
Applications	IHC
Host/Source	Rabbit
Reactivity	Human, Mouse

PRODUCT PROPERTIES

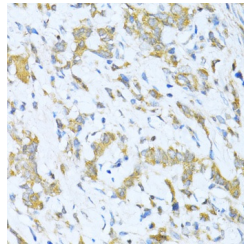
Clonality	Polyclonal
Clone ID	
Concentration	
Conjugation	Unconjugated
Purification	Affinity purification
Dilution Range	IHC 1:50-1:200
Formulation	PBS containing 0.02% Sodium Azide, 50% Glycerol, pH7.3.
Isotype	IgG
Storage Instruction	Store in a freezer at -20°C and avoid freeze-thaw cycles.

TARGET INFORMATION

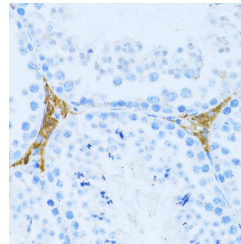
Gene ID	57542
Gene Symbol	KLHL42
Uniprot ID	KLH42_HUMAN
Immunogen	Recombinant fusion protein containing a sequence corresponding to amino acids 206-505 of human KLHL42 (NP_065833.1).
Immunogen Region	206-505
Specificity	
Immunogen Sequence	



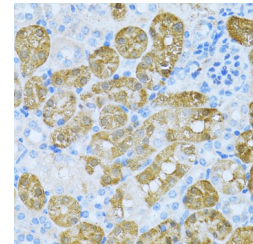
Immunohistochemistry of paraffin-embedded human liver using KLHL42 antibody (STJ116406) at dilution of 1:100 (40x lens).



Immunohistochemistry of paraffin-embedded human gastric cancer using KLHL42 antibody (STJ116406) at dilution of 1:100 (40x lens).



Immunohistochemistry of paraffin-embedded mouse testis leydig using KLHL42 antibody (STJ116406) at dilution of 1:100 (40x lens).



Immunohistochemistry of paraffin-embedded mouse kidney using KLHL42 antibody (STJ116406) at dilution of 1:100 (40x lens).

This product is suitable for in-vitro studies under the RESEARCH USE ONLY [RUO] licence. This product must not be used as for diagnostic or other medical purposes.
 St John's Laboratory Ltd, Knowledge Dock Business Centre, University Way, London, E16 2RD | Tel: 0208 223 3081