

Anti-Phospho-CBL-Y700 antibody (STJ116400)

STJ116400

GENERAL INFORMATION

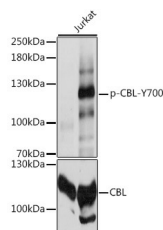
Product Type	Primary antibodies
Short Description	Rabbit polyclonal antibody anti-Phospho-CBL-Y700 is suitable for use in Western Blot.
Applications	WB
Host/Source	Rabbit
Reactivity	Human

PRODUCT PROPERTIES

Clonality	Polyclonal
Clone ID	
Concentration	
Conjugation	Unconjugated
Purification	Affinity purification
Dilution Range	WB 1:500-1:2000
Formulation	PBS containing 0.02% Sodium Azide, 50% Glycerol, pH7.3.
Isotype	IgG
Storage Instruction	Store in a freezer at -20°C and avoid freeze-thaw cycles.

TARGET INFORMATION

Gene ID	867
Gene Symbol	CBL
Uniprot ID	CBL_HUMAN
Immunogen	A synthetic phosphorylated peptide around Y700 of human CBL (NP_005179.2).
Immunogen Region	
Specificity	
Immunogen Sequence	



Western blot analysis of extracts of Jurkat cells, using Phospho-CBL-Y700 antibody (STJ116400) at 1:2000 dilution or CBL antibody (STJ22913). Jurkat cells were treated by Pervanadate (1 mM) at 37 °C for 30 minutes. Secondary antibody: HRP-Scat Anti-rabbit IgG (H+L) at 1:10000 dilution. Lysates/proteins: 25ug per lane. Blocking buffer: 3% BSA. Detection: ECL Basic Kit. Exposure time: 5s.

This product is suitable for in-vitro studies under the RESEARCH USE ONLY [RUO] licence. This product must not be used as for diagnostic or other medical purposes.
 St John's Laboratory Ltd, Knowledge Dock Business Centre, University Way, London, E16 2RD | Tel: 0208 223 3081