

Anti-Phospho-PRKCD-T505 antibody (STJ116396)

STJ116396

GENERAL INFORMATION

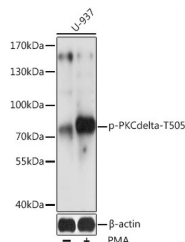
Product Type	Primary antibodies
Short Description	Rabbit polyclonal antibody anti-Phospho-PKCdelta-T505 is suitable for use in Western Blot.
Applications	WB
Host/Source	Rabbit
Reactivity	Human

PRODUCT PROPERTIES

Clonality	Polyclonal
Clone ID	
Concentration	
Conjugation	Unconjugated
Purification	Affinity purification
Dilution Range	WB 1:500-1:2000
Formulation	PBS containing 0.02% Sodium Azide, 50% Glycerol, pH7.3.
Isotype	IgG
Storage Instruction	Store in a freezer at -20°C and avoid freeze-thaw cycles.

TARGET INFORMATION

Gene ID	5580
Gene Symbol	PRKCD
Uniprot ID	KPCD_HUMAN
Immunogen	A synthetic phosphorylated peptide around T505 of human PKCdelta (NP_006245.2).
Immunogen Region	
Specificity	
Immunogen Sequence	



Western blot analysis of extracts of U-937 cells, using Phospho-PRKCDelta-T505 antibody (STJ116396) at 1:2000 dilution. U-937 cells were treated by PMA/TPA (200nM) for 30 minutes. Secondary antibody: HRP Goat Anti-rabbit IgG (H+L) at 1:10000 dilution. Lysates/proteins: 25ug per lane. Blocking buffer: 3% BSA. Detection: ECL Basic Kit. Exposure time: 60s.

This product is suitable for in-vitro studies under the RESEARCH USE ONLY [RUO] licence. This product must not be used as for diagnostic or other medical purposes.
St John's Laboratory Ltd, Knowledge Dock Business Centre, University Way, London, E16 2RD | Tel: 0208 223 3081