

## Anti-Phospho-GAB1-Y659 antibody (STJ116394)

STJ116394

### GENERAL INFORMATION

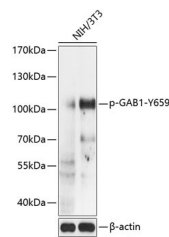
|                          |  |
|--------------------------|--|
| <b>Product Type</b>      | Primary antibodies   |
| <b>Short Description</b> | Rabbit polyclonal antibody anti-Phospho-GAB1-Y659 is suitable for use in Western Blot. |
| <b>Applications</b>      | WB   |
| <b>Host/Source</b>       | Rabbit   |
| <b>Reactivity</b>        | Human, Mouse   |

### PRODUCT PROPERTIES

|                            |   |
|----------------------------|---|
| <b>Clonality</b>           | Polyclonal  |
| <b>Clone ID</b>            |   |
| <b>Concentration</b>       |   |
| <b>Conjugation</b>         | Unconjugated  |
| <b>Purification</b>        | Affinity purification                                     |
| <b>Dilution Range</b>      | WB 1:500-1:2000   |
| <b>Formulation</b>         | PBS containing 0.02% Sodium Azide, 50% Glycerol, pH7.3.   |
| <b>Isotype</b>             | IgG   |
| <b>Storage Instruction</b> | Store in a freezer at -20°C and avoid freeze-thaw cycles. |

### TARGET INFORMATION

|                           |   |
|---------------------------|---|
| <b>Gene ID</b>            | <a href="#">2549</a>  |
| <b>Gene Symbol</b>        | <a href="#">GAB1</a>  |
| <b>Uniprot ID</b>         | <a href="#">GAB1_HUMAN</a>  |
| <b>Immunogen</b>          | A synthetic phosphorylated peptide around Y659 of human GAB1 (NP_002030.2). |
| <b>Immunogen Region</b>   |   |
| <b>Specificity</b>        |   |
| <b>Immunogen Sequence</b> |   |



Western blot analysis of extracts of NIH/3T3 cells, using Phospho-GAB1-Y659 antibody (STJ116394) at 1:2000 dilution. NIH/3T3 cells were treated by Insulin (100nM) for 10 minutes after serum-starvation overnight. Secondary antibody: HRP-Coat Anti-rabbit IgG (H+L) at 1:10000 dilution. Lysates/proteins: 25ug per lane. Blocking buffer: 3% BSA. Detection: ECL Basic Kit. Exposure time: 1s.

This product is suitable for in-vitro studies under the RESEARCH USE ONLY [RUO] licence. This product must not be used as for diagnostic or other medical purposes.  
 St John's Laboratory Ltd, Knowledge Dock Business Centre, University Way, London, E16 2RD | Tel: 0208 223 3081