

Anti-Phospho-EPHA3-Y779 antibody (STJ116388)

STJ116388

GENERAL INFORMATION

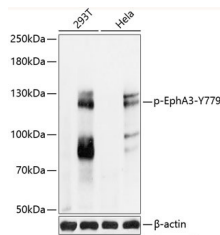
Product Type	Primary antibodies
Short Description	Rabbit polyclonal antibody anti-Phospho-EphA3-Y779 is suitable for use in Western Blot.
Applications	WB
Host/Source	Rabbit
Reactivity	Human

PRODUCT PROPERTIES

Clonality	Polyclonal
Clone ID	
Concentration	
Conjugation	Unconjugated
Purification	Affinity purification
Dilution Range	WB 1:500-1:2000
Formulation	PBS containing 0.02% Sodium Azide, 50% Glycerol, pH7.3.
Isotype	IgG
Storage Instruction	Store in a freezer at -20°C and avoid freeze-thaw cycles.

TARGET INFORMATION

Gene ID	2042
Gene Symbol	EPHA3
Uniprot ID	EPHA3_HUMAN
Immunogen	A synthetic phosphorylated peptide around Y779 of human EphA3 (NP_005224.2).
Immunogen Region	
Specificity	
Immunogen Sequence	



Western blot analysis of extracts of 293T and HeLa cells, using Phospho-EphA3-Y779 antibody (STJ116388) at 1:2000 dilution. 293T cells were treated by Pervanadate (1mM) for 30 minutes after serum-starvation overnight. HeLa cells were treated by Pervanadate (1nM) for 30 minutes after serum-starvation overnight. Secondary antibody: HRP Goat Anti-rabbit IgG (H+L) at 1:10000 dilution. Lysates/proteins: 25ug per lane. Blocking buffer: 3% BSA. Detection: ECL Basic Kit. Exposure time: 1s.

This product is suitable for in-vitro studies under the RESEARCH USE ONLY [RUO] licence. This product must not be used as for diagnostic or other medical purposes.
 St John's Laboratory Ltd, Knowledge Dock Business Centre, University Way, London, E16 2RD | Tel: 0208 223 3081