

Anti-Phospho-NR3C1-S211 antibody (STJ116380)

STJ116380

GENERAL INFORMATION

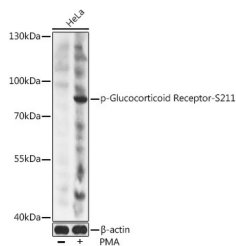
| | |
|--------------------------|---|
| Product Type | Primary antibodies |
| Short Description | Rabbit polyclonal antibody anti-Phospho-NR3C1-S211 is suitable for use in Western Blot. |
| Applications | WB |
| Host/Source | Rabbit |
| Reactivity | Human |

PRODUCT PROPERTIES

| | |
|----------------------------|---|
| Clonality | Polyclonal |
| Clone ID | |
| Concentration | |
| Conjugation | Unconjugated |
| Purification | Affinity purification |
| Dilution Range | WB 1:1000-1:2000 |
| Formulation | PBS containing 0.02% Sodium Azide, 50% Glycerol, pH7.3. |
| Isotype | IgG |
| Storage Instruction | Store in a freezer at -20°C and avoid freeze-thaw cycles. |

TARGET INFORMATION

| | |
|---------------------------|--|
| Gene ID | 2908 |
| Gene Symbol | NR3C1 |
| Uniprot ID | GCR_HUMAN |
| Immunogen | A synthetic phosphorylated peptide around S211 of human Glucocorticoid Receptor (NP_000167.1). |
| Immunogen Region | |
| Specificity | |
| Immunogen Sequence | |



Western blot analysis of extracts of HeLa cells, using Phospho-Glucocorticoid Receptor-S211 antibody (STJ116380) at 1:2000 dilution. HeLa cells were treated by PMA/TPA (200nM) for 15 minutes after serum-starvation overnight. Secondary antibody: HRP Goat Anti-rabbit IgG (H+L) at 1:10000 dilution. Lysates/proteins: 25ug per lane. Blocking buffer: 3% BSA. Detection: ECL Basic Kit. Exposure time: 10s.

This product is suitable for in-vitro studies under the RESEARCH USE ONLY [RUO] licence. This product must not be used as for diagnostic or other medical purposes.
 St John's Laboratory Ltd, Knowledge Dock Business Centre, University Way, London, E16 2RD | Tel: 0208 223 3081