

Anti-Phospho-EIF2S1-S51 antibody (STJ116376)

STJ116376

GENERAL INFORMATION

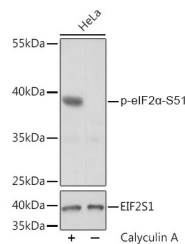
Product Type	Primary antibodies
Short Description	Rabbit polyclonal antibody anti-Phospho-eIF2 Alpha-S51 is suitable for use in Western Blot, Immunohistochemistry and Immunoprecipitation.
Applications	WB, IHC, IP
Host/Source	Rabbit
Reactivity	Human, Mouse, Rat

PRODUCT PROPERTIES

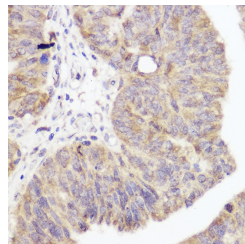
Clonality	Polyclonal
Clone ID	
Concentration	
Conjugation	Unconjugated
Purification	Affinity purification
Dilution Range	WB 1:1000-1:2000 IHC 1:50-1:200 IP 1:50-1:100
Formulation	PBS containing 0.02% Sodium Azide, 50% Glycerol, pH7.3.
Isotype	IgG
Storage Instruction	Store in a freezer at -20°C and avoid freeze-thaw cycles.

TARGET INFORMATION

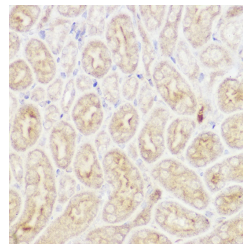
Gene ID	1965
Gene Symbol	EIF2S1
Uniprot ID	IF2A_HUMAN
Immunogen	A synthetic phosphorylated peptide around S51 of human eIF2 Alpha (NP_004085.1).
Immunogen Region	
Specificity	
Immunogen Sequence	



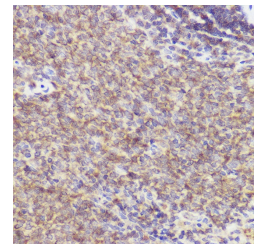
Western blot analysis of extracts of HeLa cells, using Phospho-eIF2 Alpha-S51 polyclonal antibody (STJ116376) at 1:2000 dilution or EIF2S1 antibody (STJ23509). HeLa cells were treated by Calyculin A (100nM) for 30 minutes after serum-starvation overnight. Secondary antibody: HRP Goat Anti-rabbit IgG (H+L) at 1:10000 dilution. Lysates/proteins: 25ug per lane. Blocking buffer: 3% BSA. Detection: ECL Basic Kit. Exposure time: 1s.



Immunohistochemistry of paraffin-embedded human colon carcinoma using Phospho-eIF2 Alpha-S51 antibody (STJ116376) at dilution of 1:150 (40x lens).



Immunohistochemistry of paraffin-embedded mouse kidney using Phospho-eIF2 Alpha-S51 antibody (STJ116376) at dilution of 1:150 (40x lens).



Immunohistochemistry of paraffin-embedded rat spleen using Phospho-eIF2 Alpha-S51 antibody (STJ116376) at dilution of 1:150 (40x lens).

This product is suitable for in-vitro studies under the RESEARCH USE ONLY [RUO] licence. This product must not be used as for diagnostic or other medical purposes.

St John's Laboratory Ltd, Knowledge Dock Business Centre, University Way, London, E16 2RD | Tel: 0208 223 3081