

Anti-Phospho-NFKBIA-S32 antibody (STJ116373)

STJ116373

GENERAL INFORMATION

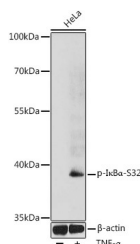
Product Type	Primary antibodies
Short Description	Rabbit polyclonal antibody anti-Phospho-I Kappa B Alpha-S32 is suitable for use in Western Blot, Immunohistochemistry and Immunofluorescence.
Applications	WB, IHC, IF
Host/Source	Rabbit
Reactivity	Human, Mouse, Rat

PRODUCT PROPERTIES

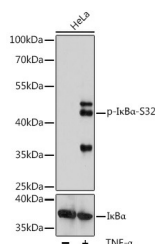
Clonality	Polyclonal
Clone ID	
Concentration	
Conjugation	Unconjugated
Purification	Affinity purification
Dilution Range	WB 1:500-1:2000 IHC 1:50-1:200 IF 1:50-1:200
Formulation	PBS containing 0.02% Sodium Azide, 50% Glycerol, pH7.3.
Isotype	IgG
Storage	Store in a freezer at -20°C and avoid freeze-thaw cycles.
Instruction	

TARGET INFORMATION

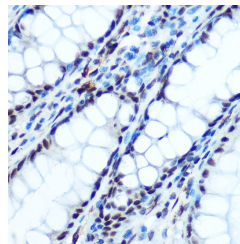
Gene ID	4792
Gene Symbol	NFKBIA
Uniprot ID	IKBA_HUMAN
Immunogen	A synthetic phosphorylated peptide around S32 of human I Kappa B Alpha (NP_065390.1).
Immunogen Region	
Specificity	
Immunogen Sequence	



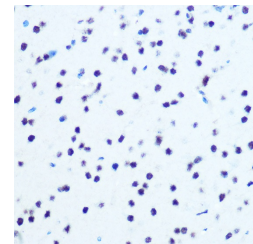
Western blot analysis of extracts of HeLa cells, using Phospho-I Kappa B Alpha-S32 antibody (STJ116373) at 1:1000 dilution. HeLa cells were treated by TNF-Alpha (20 ng/mL) at 37 °C for 30 minutes. Secondary antibody: HRP Goat Anti-rabbit IgG (H+L) at 1:10000 dilution. Lysates/proteins: 25ug per lane. Blocking buffer: 3% BSA. Detection: ECL Basic Kit. Exposure time: 90s.



Western blot analysis of extracts of HeLa cells, using Phospho-I Kappa B Alpha-S32 polyclonal antibody (STJ116373) at 1:1000 dilution or IKB alpha antibody (STJ252747). HeLa cells were treated by TNF-Alpha (20 ng/mL) at 37 °C for 30 minutes. Secondary antibody: HRP Goat Anti-rabbit IgG (H+L) at 1:10000 dilution. Lysates/proteins: 25ug per lane. Blocking buffer: 3% BSA. Detection: ECL Basic Kit. Exposure time: 3min.



Immunohistochemistry of paraffin-embedded human colon using Phospho-I Kappa B Alpha-S32 rabbit polyclonal antibody (STJ116373) at dilution of 1:100 (40x lens).



Immunohistochemistry of paraffin-embedded mouse brain using Phospho-I Kappa B Alpha-S32 rabbit polyclonal antibody (STJ116373) at dilution of 1:100 (40x lens).

This product is suitable for in-vitro studies under the RESEARCH USE ONLY [RUO] licence. This product must not be used as for diagnostic or other medical purposes.

St John's Laboratory Ltd, Knowledge Dock Business Centre, University Way, London, E16 2RD | Tel: 0208 223 3081