

Anti-Phospho-STAT3-S727 antibody (STJ116371)

STJ116371

GENERAL INFORMATION

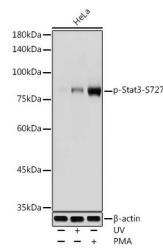
Product Type	Primary antibodies
Short Description	Rabbit polyclonal antibody anti-Phospho-Stat3-S727 is suitable for use in Western Blot, Immunohistochemistry and Immunoprecipitation.
Applications	WB, IHC, IP
Host/Source	Rabbit
Reactivity	Human, Mouse, Rat

PRODUCT PROPERTIES

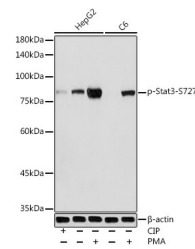
Clonality	Polyclonal
Clone ID	
Concentration	
Conjugation	Unconjugated
Purification	Affinity purification
Dilution Range	WB 1:500-1:2000 IHC 1:50-1:200 IP 1:50-1:100
Formulation	PBS containing 0.02% Sodium Azide, 50% Glycerol, pH7.3.
Isotype	IgG
Storage Instruction	Store in a freezer at -20°C and avoid freeze-thaw cycles.

TARGET INFORMATION

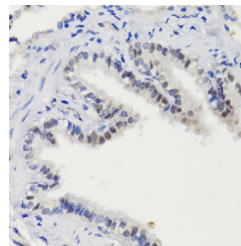
Gene ID	6774
Gene Symbol	STAT3
Uniprot ID	STAT3_HUMAN
Immunogen	A synthetic phosphorylated peptide around S727 of human Stat3 (NP_644805.1).
Immunogen Region	
Specificity	
Immunogen Sequence	



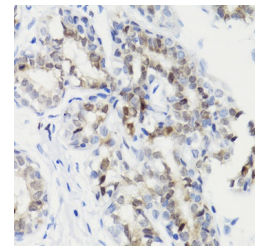
Western blot analysis of extracts of HeLa cells, using Phospho-Stat3-S727 antibody (STJ116371) at 1:1000 dilution. HeLa cells were treated by UV at room temperature for 15-30 minutes. HeLa cells were treated by PMA/TPA (200 nM) at 37 °C for 15 minutes after serum-starvation overnight. Secondary antibody: HRP Goat Anti-rabbit IgG (H+L) at 1:10000 dilution. Lysates/proteins: 25ug per lane. Blocking buffer: 3% nonfat dry milk in TBST. Detection: ECL Basic Kit. Exposure time: 1s.



Western blot analysis of extracts of various cell lines, using Phospho-Stat3-S727 antibody (STJ116371) at 1:1000 dilution. HepG2 cells and C6 cells were treated by PMA/TPA (200 nM) at 37 °C for 30 minutes after serum-starvation overnight. HepG2 cells were treated by CIP (20uL/400ul) at 37 °C for 1 hour. Secondary antibody: HRP Goat Anti-rabbit IgG (H+L) at 1:10000 dilution. Lysates/proteins: 25ug per lane. Blocking buffer: 3% nonfat dry milk in TBST. Detection: ECL Basic Kit. Exposure time: 1s.



Immunohistochemistry of paraffin-embedded rat lung using Phospho-Stat3-S727 antibody (STJ116371) at dilution of 1:100 (40x lens).



Immunohistochemistry of paraffin-embedded human breast cancer using Phospho-Stat3-S727 antibody (STJ116371) at dilution of 1:100 (40x lens).

This product is suitable for in-vitro studies under the RESEARCH USE ONLY [RUO] licence. This product must not be used as for diagnostic or other medical purposes.
St John's Laboratory Ltd, Knowledge Dock Business Centre, University Way, London, E16 2RD | Tel: 0208 223 3081