

Anti-IGF2BP3 antibody (300-579) (STJ116296)

STJ116296

GENERAL INFORMATION

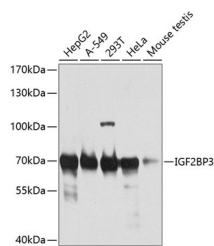
Product Type	Primary antibodies
Short Description	Rabbit polyclonal antibody anti-IGF2BP3 (300-579) is suitable for use in Western Blot, Immunohistochemistry, Immunofluorescence and Immunoprecipitation.
Applications	WB, IHC, IF, IP
Host/Source	Rabbit
Reactivity	Human, Mouse, Rat

PRODUCT PROPERTIES

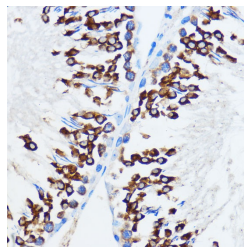
Clonality	Polyclonal
Clone ID	
Concentration	
Conjugation	Unconjugated
Purification	Affinity purification
Dilution Range	WB 1:500-1:1000 IHC 1:50-1:200 IF 1:50-1:100 IP 1:20-1:50
Formulation	PBS containing 0.02% Sodium Azide, 50% Glycerol, pH7.3.
Isotype	IgG
Storage Instruction	Store in a freezer at -20°C and avoid freeze-thaw cycles.

TARGET INFORMATION

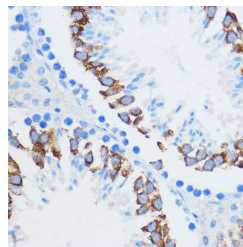
Gene ID	10643
Gene Symbol	IGF2BP3
Uniprot ID	IF2B3_HUMAN
Immunogen	Recombinant fusion protein containing a sequence corresponding to amino acids 300-579 of human IGF2BP3 (NP_006538.2).
Immunogen Region	300-579
Specificity	
Immunogen Sequence	



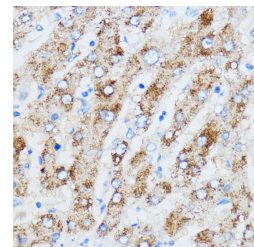
Western blot analysis of extracts of various cell lines, using IGF2BP3 antibody (STJ116296) at 1:1000 dilution. Secondary antibody: HRP Goat Anti-rabbit IgG (H+L) at 1:10000 dilution. Lysates/proteins: 25ug per lane. Blocking buffer: 3% nonfat dry milk in TBST. Detection: ECL Basic Kit. Exposure time: 15s.



Immunohistochemistry of paraffin-embedded rat testis using IGF2BP3 antibody (STJ116296) at dilution of 1:100 (40x lens). Perform microwave antigen retrieval with 10 mM PBS buffer pH 7, 2 before commencing with immunohistochemistry staining protocol.



Immunohistochemistry of paraffin-embedded mouse liver using IGF2BP3 antibody (STJ116296) at dilution of 1:100 (40x lens). Perform microwave antigen retrieval with 10 mM PBS buffer pH 7, 2 before commencing with immunohistochemistry staining protocol.



Immunohistochemistry of paraffin-embedded human liver using IGF2BP3 antibody (STJ116296) at dilution of 1:100 (40x lens). Perform microwave antigen retrieval with 10 mM PBS buffer pH 7, 2 before commencing with immunohistochemistry staining protocol.

This product is suitable for in-vitro studies under the RESEARCH USE ONLY [RUO] licence. This product must not be used as for diagnostic or other medical purposes.

St John's Laboratory Ltd, Knowledge Dock Business Centre, University Way, London, E16 2RD | Tel: 0208 223 3081