

Anti-EIF4G1 antibody (400-500) (STJ116294)

STJ116294

GENERAL INFORMATION

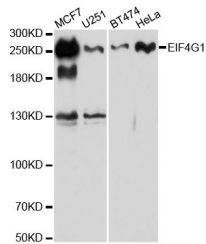
Product Type	Primary antibodies
Short Description	Rabbit polyclonal antibody anti-EIF4G (400-500) is suitable for use in Western Blot and Immunohistochemistry.
Applications	WB, IHC
Host/Source	Rabbit
Reactivity	Human

PRODUCT PROPERTIES

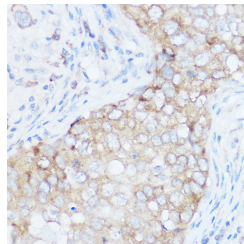
Clonality	Polyclonal
Clone ID	
Concentration	
Conjugation	Unconjugated
Purification	Affinity purification
Dilution Range	WB 1:500-1:1000 IHC 1:50-1:200
Formulation	PBS containing 0.02% Sodium Azide, 50% Glycerol, pH7.3.
Isotype	IgG
Storage Instruction	Store in a freezer at -20°C and avoid freeze-thaw cycles.

TARGET INFORMATION

Gene ID	1981
Gene Symbol	EIF4G1
Uniprot ID	IF4G1_HUMAN
Immunogen	A synthetic peptide corresponding to a sequence within amino acids 400-500 of human EIF4G (NP_886553.3).
Immunogen Region	400-500
Specificity	
Immunogen Sequence	



Western blot analysis of extracts of various cell lines, using EIF4G antibody (STJ116294) at 1:1000 dilution. Secondary antibody: HRP-Coat Anti-rabbit IgG (H+L) at 1:10000 dilution. Lysates/proteins: 25ug per lane. Blocking buffer: 3% nonfat dry milk in TBST. Detection: ECL Basic Kit. Exposure time: 60S.



Immunohistochemistry of paraffin-embedded human breast cancer using EIF4G rabbit polyclonal antibody (STJ116294) at dilution of 1:100 (40x lens).

This product is suitable for in-vitro studies under the RESEARCH USE ONLY [RUO] licence. This product must not be used as for diagnostic or other medical purposes.
St John's Laboratory Ltd, Knowledge Dock Business Centre, University Way, London, E16 2RD | Tel: 0208 223 3081