

Anti-ZCCHC11 antibody (1-290) (STJ116288)

STJ116288

GENERAL INFORMATION

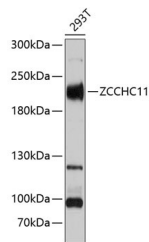
Product Type	Primary antibodies
Short Description	Rabbit polyclonal antibody anti-ZCCHC11 (1-290) is suitable for use in Western Blot and Immunofluorescence.
Applications	WB, IF
Host/Source	Rabbit
Reactivity	Human, Mouse, Rat

PRODUCT PROPERTIES

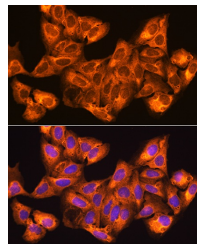
Clonality	Polyclonal
Clone ID	
Concentration	
Conjugation	Unconjugated
Purification	Affinity purification
Dilution Range	WB 1:500-1:1000 IF 1:50-1:200
Formulation	PBS containing 0.02% Sodium Azide, 50% Glycerol, pH7.3.
Isotype	IgG
Storage Instruction	Store in a freezer at -20°C and avoid freeze-thaw cycles.

TARGET INFORMATION

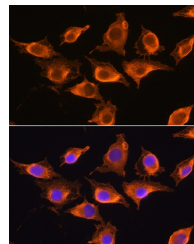
Gene ID	23318
Gene Symbol	TUT4
Uniprot ID	TUT4_HUMAN
Immunogen	Recombinant fusion protein containing a sequence corresponding to amino acids 1-290 of human ZCCHC11 (NP_001009881.1).
Immunogen Region	1-290
Specificity	
Immunogen Sequence	



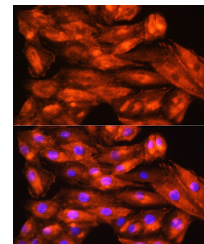
Western blot analysis of extracts of 293T cells, using ZCCHC11 Antibody (STJ116288) at 1:3000 dilution. Secondary antibody: HRP Goat Anti-rabbit IgG (H+L) at 1:10000 dilution. Lysates/proteins: 25ug per lane. Blocking buffer: 3% nonfat dry milk in TBST. Detection: ECL Basic Kit. Exposure time: 20s.



Immunofluorescence analysis of U2OS cells using ZCCHC11 rabbit polyclonal antibody (STJ116288) at dilution of 1:100. Blue: DAPI for nuclear staining.



Immunofluorescence analysis of L929 cells using ZCCHC11 rabbit polyclonal antibody (STJ116288) at dilution of 1:100. Blue: DAPI for nuclear staining.



Immunofluorescence analysis of H9C2 cells using ZCCHC11 rabbit polyclonal antibody (STJ116288) at dilution of 1:100. Blue: DAPI for nuclear staining.