

Anti-NLRX1 antibody (87-360) (STJ116270)

STJ116270

GENERAL INFORMATION

Product Type	Primary antibodies
Short Description	Rabbit polyclonal antibody anti-NLRX1 (87-360) is suitable for use in Western Blot and Immunoprecipitation.
Applications	WB, IP
Host/Source	Rabbit
Reactivity	Human, Mouse, Rat

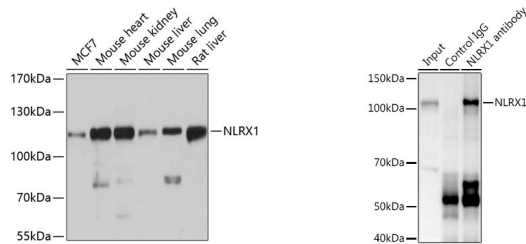
PRODUCT PROPERTIES

Clonality	Polyclonal
Clone ID	
Concentration	
Conjugation	Unconjugated
Purification	Affinity purification
Dilution Range	WB 1:500-1:2000 IP 1:50-1:200
Formulation	PBS containing 0.02% Sodium Azide, 50% Glycerol, pH7.3.
Isotype	IgG
Storage Instruction	Store in a freezer at -20°C and avoid freeze-thaw cycles.

TARGET INFORMATION

Gene ID	79671
Gene Symbol	NLRX1
Uniprot ID	NLRX1_HUMAN
Immunogen	Recombinant fusion protein containing a sequence corresponding to amino acids 87-360 of human NLRX1 (NP_001269073.1).

Immunogen Region
87-360
Specificity
Immunogen
Sequence



Western blot analysis of extracts of various cell lines, using NLRX1 antibody (STJ116270) at 1:3000 dilution. Secondary antibody: HRP Goat Anti-rabbit IgG (H+L) at 1:10000 dilution. Lysates/proteins: 25ug per lane. Blocking buffer: 3% nonfat dry milk in TBST. Detection: ECL Basic Kit. Exposure time: 10s.

Immunoprecipitation analysis of 600ug extracts of mouse kidney using 3ug NLRX1 antibody (STJ116270). Western blot was performed from the immunoprecipitate using NLRX1 (STJ116270) at a dilution of 1:1000.

This product is suitable for in-vitro studies under the RESEARCH USE ONLY [RUO] licence. This product must not be used as for diagnostic or other medical purposes.
St John's Laboratory Ltd, Knowledge Dock Business Centre, University Way, London, E16 2RD | Tel: 0208 223 3081