

Anti-SERPINA10 antibody (165-444) (STJ116256)

STJ116256

GENERAL INFORMATION

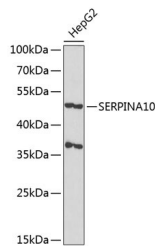
Product Type	Primary antibodies
Short Description	Rabbit polyclonal antibody anti-SERPINA10 (165-444) is suitable for use in Western Blot and Immunofluorescence.
Applications	WB, IF
Host/Source	Rabbit
Reactivity	Human, Mouse, Rat

PRODUCT PROPERTIES

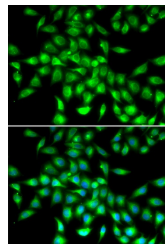
Clonality	Polyclonal
Clone ID	
Concentration	
Conjugation	Unconjugated
Purification	Affinity purification
Dilution Range	WB 1:500-1:2000 IF 1:20-1:100
Formulation	PBS containing 0.02% Sodium Azide, 50% Glycerol, pH7.3.
Isotype	IgG
Storage Instruction	Store in a freezer at -20°C and avoid freeze-thaw cycles.

TARGET INFORMATION

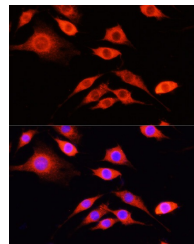
Gene ID	51156
Gene Symbol	SERPINA10
Uniprot ID	ZPL_HUMAN
Immunogen	Recombinant fusion protein containing a sequence corresponding to amino acids 165-444 of human SERPINA10 (NP_001094077.1).
Immunogen Region	165-444
Specificity	
Immunogen Sequence	



Western blot analysis of extracts of HepG2 cells, using SERPINA10 antibody (STJ116256) at 1:1000 dilution. Secondary antibody: HRP Goat Anti-rabbit IgG (H+L) at 1:10000 dilution. Lysates/proteins: 25ug per lane. Blocking buffer: 3% nonfat dry milk in TBST. Detection: ECL Basic Kit. Exposure time: 120s.



Immunofluorescence analysis of A549 cells using SERPINA10 antibody (STJ116256). Blue: DAPI for nuclear staining.



Immunofluorescence analysis of PC-12 cells using SERPINA10 antibody (STJ116256) at dilution of 1:100 (40x lens). Blue: DAPI for nuclear staining.

This product is suitable for in-vitro studies under the RESEARCH USE ONLY [RUO] licence. This product must not be used as for diagnostic or other medical purposes.
St John's Laboratory Ltd, Knowledge Dock Business Centre, University Way, London, E16 2RD | Tel: 0208 223 3081