

Anti-ARHGEF1 antibody (783-912) (STJ116239)

STJ116239

GENERAL INFORMATION

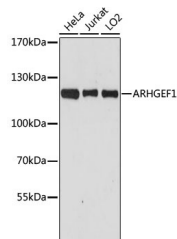
Product Type	Primary antibodies
Short Description	Rabbit polyclonal antibody anti-ARHGEF1 (783-912) is suitable for use in Western Blot, Immunohistochemistry and Immunofluorescence.
Applications	WB, IHC, IF
Host/Source	Rabbit
Reactivity	Human, Rat

PRODUCT PROPERTIES

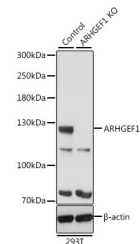
Clonality	Polyclonal
Clone ID	
Concentration	
Conjugation	Unconjugated
Purification	Affinity purification
Dilution Range	WB 1:500-1:2000 IHC 1:50-1:100 IF 1:50-1:200
Formulation	PBS containing 0.02% Sodium Azide, 50% Glycerol, pH7.3.
Isotype	IgG
Storage Instruction	Store in a freezer at -20°C and avoid freeze-thaw cycles.

TARGET INFORMATION

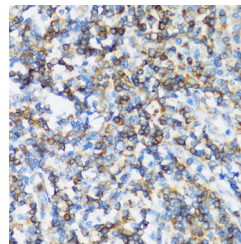
Gene ID	9138
Gene Symbol	ARHGEF1
Uniprot ID	ARHG1_HUMAN
Immunogen	Recombinant fusion protein containing a sequence corresponding to amino acids 783-912 of human ARHGEF1 (NP_004697.2).
Immunogen Region	783-912
Specificity	
Immunogen Sequence	



Western blot analysis of extracts of various cell lines, using ARHGEF1 antibody (STJ116239) at 1:3000 dilution. Secondary antibody: HRP Goat Anti-rabbit IgG (H+L) at 1:10000 dilution. Lysates/proteins: 25ug per lane. Blocking buffer: 3% nonfat dry milk in TBST. Detection: ECL Basic Kit. Exposure time: 90s.



Western blot analysis of extracts from normal (control) and ARHGEF1 knockout (KO) 293T cells, using ARHGEF1 antibody (STJ116239) at 1:500 dilution. Secondary antibody: HRP Goat Anti-rabbit IgG (H+L) at 1:10000 dilution. Lysates/proteins: 25ug per lane. Blocking buffer: 3% nonfat dry milk in TBST. Detection: ECL Basic Kit. Exposure time: 10s.



Immunohistochemistry of paraffin-embedded human tonsil using ARHGEF1 antibody (STJ116239) at dilution of 1:100 (40x lens).