

Anti-CHI3L1 antibody (22-240) (STJ116193)

STJ116193

GENERAL INFORMATION

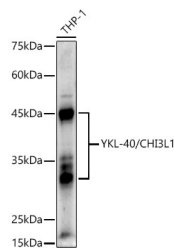
Product Type	Primary antibodies
Short Description	Rabbit polyclonal antibody anti-YKL-40/CHI3L1 (22-240) is suitable for use in Western Blot, Immunohistochemistry and Immunofluorescence.
Applications	WB, IHC, IF
Host/Source	Rabbit
Reactivity	Human, Mouse, Rat

PRODUCT PROPERTIES

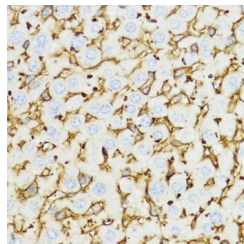
Clonality	Polyclonal
Clone ID	
Concentration	
Conjugation	Unconjugated
Purification	Affinity purification
Dilution Range	WB 1:500-1:2000 IHC 1:50-1:200 IF 1:50-1:200
Formulation	PBS containing 0.02% Sodium Azide, 50% Glycerol, pH7.3.
Isotype	IgG
Storage Instruction	Store in a freezer at -20°C and avoid freeze-thaw cycles.

TARGET INFORMATION

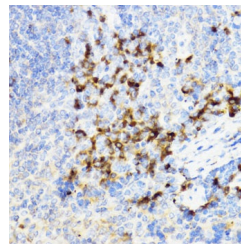
Gene ID	1116
Gene Symbol	CHI3L1
Uniprot ID	CH3L1_HUMAN
Immunogen	Recombinant fusion protein containing a sequence corresponding to amino acids 22-240 of human YKL-40/CHI3L1 (NP_001267.2).
Immunogen Region	22-240
Specificity	
Immunogen Sequence	



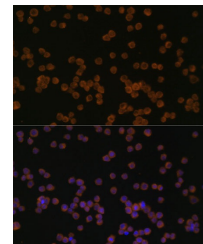
Western blot analysis of extracts of THP-1 cells, using YKL-40/CHI3L1 antibody (STJ116193) at 1:1000 dilution. Secondary antibody: HRP Goat Anti-rabbit IgG (H+L) at 1:10000 dilution. Lysates/proteins: 25µg per lane. Blocking buffer: 3% nonfat dry milk in TBST. Detection: ECL Enhanced Kit. Exposure time: 180s.



Immunohistochemistry of paraffin-embedded mouse liver using YKL-40/CHI3L1 antibody (STJ116193) at dilution of 1:100 (40x lens). Perform microwave antigen retrieval with 10 mM PBS buffer pH 7, 2 before commencing with immunohistochemistry staining protocol.



Immunohistochemistry of paraffin-embedded mouse spleen using YKL-40/CHI3L1 antibody (STJ116193) at dilution of 1:100 (40x lens). Perform microwave antigen retrieval with 10 mM PBS buffer pH 7, 2 before commencing with immunohistochemistry staining protocol.



Immunofluorescence analysis of Raw264.7 cells using YKL-40/CHI3L1 antibody (STJ116193) at dilution of 1:100. Blue: DAPI for nuclear staining.