

Anti-APEX1 antibody (1-318) (STJ116180)

STJ116180

GENERAL INFORMATION

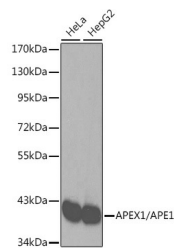
Product Type	Primary antibodies
Short Description	Rabbit polyclonal antibody anti-APEX1 (1-318) is suitable for use in Western Blot, Immunofluorescence and Immunoprecipitation.
Applications	WB, IF, IP
Host/Source	Rabbit
Reactivity	Human

PRODUCT PROPERTIES

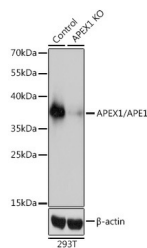
Clonality	Polyclonal
Clone ID	
Concentration	
Conjugation	Unconjugated
Purification	Affinity purification
Dilution Range	WB 1:500-1:2000 IF 1:50-1:100 IP 1:50-1:200
Formulation	PBS containing 0.02% Sodium Azide, 50% Glycerol, pH7.3.
Isotype	IgG
Storage Instruction	Store in a freezer at -20°C and avoid freeze-thaw cycles.

TARGET INFORMATION

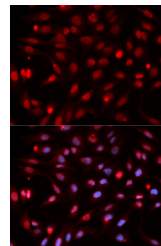
Gene ID	328
Gene Symbol	APEX1
Uniprot ID	APEX1_HUMAN
Immunogen	Recombinant fusion protein containing a sequence corresponding to amino acids 1-318 of human APEX1/APE1 (NP_542380.1).
Immunogen Region	1-318
Specificity	
Immunogen Sequence	



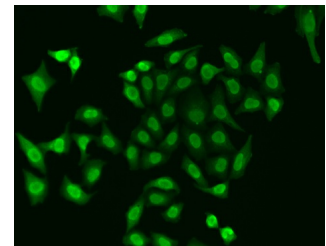
Western blot analysis of extracts of various cell lines, using APEX1/APE1 antibody (STJ116180). Secondary antibody: HRP Goat Anti-rabbit IgG (H+L) at 1:10000 dilution. Lysates/proteins: 25ug per lane. Blocking buffer: 3% nonfat dry milk in TBST.



Western blot analysis of extracts from normal (control) and APEX1/APE1 knockout (KO) 293T cells, using APEX1/APE1 antibody (STJ116180) at 1:3000 dilution. Secondary antibody: HRP Goat Anti-rabbit IgG (H+L) at 1:10000 dilution. Lysates/proteins: 25ug per lane. Blocking buffer: 3% nonfat dry milk in TBST. Detection: ECL Basic Kit. Exposure time: 1s.



Immunofluorescence analysis of HeLa cells using APEX1/APE1 antibody (STJ116180). Blue: DAPI for nuclear staining.



Immunofluorescence analysis of A549 cells using APEX1/APE1 antibody (STJ116180).