

Anti-HP antibody (123-347) (STJ116119)

STJ116119

GENERAL INFORMATION

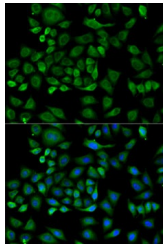
| | |
|--------------------------|--|
| Product Type | Primary antibodies |
| Short Description | Rabbit polyclonal antibody anti-HP (123-347) is suitable for use in Western Blot and Immunofluorescence. |
| Applications | WB, IF |
| Host/Source | Rabbit |
| Reactivity | Human, Mouse |

PRODUCT PROPERTIES

| | |
|-----------------------|---|
| Clonality | Polyclonal |
| Clone ID | |
| Concentration | |
| Conjugation | Unconjugated |
| Purification | Affinity purification |
| Dilution Range | WB 1:500-1:2000 IF 1:50-1:200 |
| Formulation | PBS containing 0.02% Sodium Azide, 50% Glycerol, pH7.3. |
| Isotype | IgG |
| Storage | Store in a freezer at -20°C and avoid freeze-thaw cycles. |
| Instruction | |

TARGET INFORMATION

| | |
|---------------------------|--|
| Gene ID | 3240 |
| Gene Symbol | HP |
| Uniprot ID | HPT_HUMAN |
| Immunogen | Recombinant fusion protein containing a sequence corresponding to amino acids 123-347 of human Haptoglobin (Haptoglobin (HP)) (NP_001119574.1). |
| Immunogen Region | 123-347 |
| Specificity | |
| Immunogen Sequence | |



Immunofluorescence analysis of HeLa cells using Haptoglobin (Haptoglobin (HP)) antibody (STJ116119). Blue: DAPI for nuclear staining.

This product is suitable for in-vitro studies under the RESEARCH USE ONLY [RUO] licence. This product must not be used as for diagnostic or other medical purposes.
St John's Laboratory Ltd, Knowledge Dock Business Centre, University Way, London, E16 2RD | Tel: 0208 223 3081