

Anti-METTL2A antibody (139-378) (STJ116101)

STJ116101

GENERAL INFORMATION

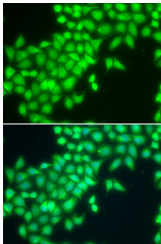
Product Type	Primary antibodies
Short Description	Rabbit polyclonal antibody anti-METTL2A (139-378) is suitable for use in Immunofluorescence.
Applications	IF
Host/Source	Rabbit
Reactivity	Human

PRODUCT PROPERTIES

Clonality	Polyclonal
Clone ID	
Concentration	
Conjugation	Unconjugated
Purification	Affinity purification
Dilution Range	IF 1:50-1:100
Formulation	PBS containing 0.02% Sodium Azide, 50% Glycerol, pH7.3.
Isotype	IgG
Storage Instruction	Store in a freezer at -20°C and avoid freeze-thaw cycles.

TARGET INFORMATION

Gene ID	339175
Gene Symbol	METTL2A
Uniprot ID	MET2A_HUMAN
Immunogen	Recombinant fusion protein containing a sequence corresponding to amino acids 139-378 of human METTL2A (NP_859076.3).
Immunogen Region	139-378
Specificity	
Immunogen Sequence	



Immunofluorescence analysis of MCF-7 cells using METTL2A antibody (STJ116101). Blue: DAPI for nuclear staining.