

Anti-SETD5 antibody (520-740) (STJ116075)

STJ116075

GENERAL INFORMATION

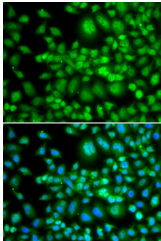
Product Type	Primary antibodies
Short Description	Rabbit polyclonal antibody anti-SETD5 (520-740) is suitable for use in Immunohistochemistry and Immunofluorescence.
Applications	IHC, IF
Host/Source	Rabbit
Reactivity	Human

PRODUCT PROPERTIES

Clonality	Polyclonal
Clone ID	
Concentration	
Conjugation	Unconjugated
Purification	Affinity purification
Dilution Range	IHC 1:50-1:200 IF 1:50-1:200
Formulation	PBS containing 0.02% Sodium Azide, 50% Glycerol, pH7.3.
Isotype	IgG
Storage Instruction	Store in a freezer at -20°C and avoid freeze-thaw cycles.

TARGET INFORMATION

Gene ID	55209
Gene Symbol	SETD5
Uniprot ID	SETD5_HUMAN
Immunogen	Recombinant fusion protein containing a sequence corresponding to amino acids 520-740 of human SETD5 (NP_001073986.1).
Immunogen Region	520-740
Specificity	
Immunogen Sequence	



Immunofluorescence analysis of MCF-7 cells using SETD5 antibody (STJ116075). Blue: DAPI for nuclear staining.