

Anti-CCNE2 antibody (255-404) (STJ116021)

STJ116021

GENERAL INFORMATION

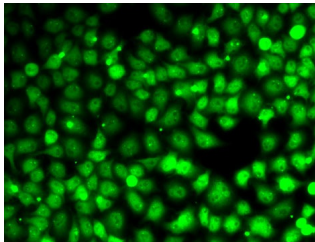
Product Type	Primary antibodies
Short Description	Rabbit polyclonal antibody anti-CCNE2 (255-404) is suitable for use in Western Blot, Immunohistochemistry and Immunofluorescence.
Applications	WB, IHC, IF
Host/Source	Rabbit
Reactivity	Human, Rat

PRODUCT PROPERTIES

Clonality	Polyclonal
Clone ID	
Concentration	
Conjugation	Unconjugated
Purification	Affinity purification
Dilution Range	WB 1:500-1:2000 IHC 1:50-1:200 IF 1:50-1:200
Formulation	PBS containing 0.02% Sodium Azide, 50% Glycerol, pH7.3.
Isotype	IgG
Storage Instruction	Store in a freezer at -20°C and avoid freeze-thaw cycles.

TARGET INFORMATION

Gene ID	9134
Gene Symbol	CCNE2
Uniprot ID	CCNE2_HUMAN
Immunogen	Recombinant fusion protein containing a sequence corresponding to amino acids 255-404 of human Cyclin E2 (NP_477097.1).
Immunogen Region	255-404
Specificity	
Immunogen Sequence	



Immunofluorescence analysis of MCF7 cells using Cyclin E2 antibody (STJ116021).

This product is suitable for in-vitro studies under the RESEARCH USE ONLY [RUO] licence. This product must not be used as for diagnostic or other medical purposes.
St John's Laboratory Ltd, Knowledge Dock Business Centre, University Way, London, E16 2RD | Tel: 0208 223 3081